

# LightSpeed Mount

Rail-free Solar Mounting System for Composite and Tile Roofs

Installation Manual



**PEGASUS SOLAR™**  
LightSpeed Mounting Systems



Pegasus Solar Inc. | 100 West Ohio Ave., Richmond, CA 94804 | 408.638.9655

[www.pegasussolar.com](http://www.pegasussolar.com)

# Table of Contents

Overview .....	3
Ratings .....	3
Certifications and Code Compliance .....	3
Safety .....	3
Parts List .....	4
Product Identification .....	5
Mount Assembly Diagram .....	6
Step One –Design Array Layout on Roof .....	7
Step Two – Mark Rafters and Determine Attachment Points .....	8
Step Three – Install and Level Mount Assemblies .....	9
Step Four – Wire Management .....	11-12
Step Five – Install Modules .....	13-15
Tile Roof Installation Instructions .....	16-19
Double Mount Installation Instructions .....	20
Optional – Skirt Installation Instructions .....	21
Removing a Module .....	22
Bonding Connection Paths to Ground .....	24
Bonding and Grounding the Array .....	25
Best Practice .....	26
Maintenance .....	26
Troubleshooting and Removal of System .....	27
Appendix A – Torque and Pull-Out Specs .....	28
Torque Settings for LightSpeed Mount hardware .....	28
Lag pull-out strengths in common lumber (lbs) .....	28
Appendix B – LightSpeed Mount Compatible Modules for UL2703 Electrical Bonding/Grounding ...	29
Appendix C – Approved Module Load Characteristics .....	30
Appendix D – Span Tables .....	31-50

Pegasus Solar looks forward to receiving your input regarding the accuracy and user friendliness of this publication. Please email [support@pegasussolar.com](mailto:support@pegasussolar.com) with your comments.

## Overview

This Installation Manual covers the required aspects of installing the Pegasus Solar LightSpeed Mount Residential rail-free mounting system. LightSpeed Mount Residential is engineered for residential sloped roofs with wood frame construction. This system is intended for use with solar modules that have the patent pending Pegasus Corner Hinges factory installed. Please contact us for the latest list of modules with LightSpeed Corner Hinges.

The LightSpeed Mount may be used to ground and/or mount a PV module complying with UL 1703 only when the specific module has been evaluated for grounding and/or mounting in compliance with the included instructions. Periodic inspection of the mounting system should be conducted for loose components, loose fasteners, or any corrosion, and if found, those components should be replaced immediately. Keep copper away from aluminum and galvanized steel by securing bare copper conductors in a fashion that maintains a minimum 1/4" separation.

## Ratings

	Landscape	Portrait
Maximum module size*	72 cell, 78.75 x 39.5 inches	60 cell, 39.5 x 66 inches
Maximum spacing between mounts*	6 feet	
Maximum modules installed	Lesser of 100 or 15 modules/row	
Module frame heights	35 and 40 mm	
Maximum fuse amp rating	20 amps	
Minimum ground wire gauge	10 AWG	
Approved modules for UL2703	See Appendix B	

\*See Span Tables in Engineering Letter Dated January 4, 2017 and Appendix D.

## Certifications and Code Compliance

- UL 2703 for Electrical Bonding and Grounding.
- UL 2703 Fire Class A for steep-slope roofs when using Type 1 and Type 2 listed PV modules (Skirt optional).
- UL 2703 Fire Class A for low-slope roofs when using Skirt with 2 1/8" or less gap between roof and Skirt, and when using Type 1 and Type 2 listed PV modules.
- ASCE 7-05 Minimum Design Loads for Buildings and Other Structures.
- ASCE 7-10 Minimum Design Loads for Buildings Other Structures.

## Safety

- Wear proper OSHA approved safety equipment when working on a roof.
- Wear proper eye and fall protection.
- Use properly anchored fall protection equipment. LightSpeed Mount products are not rated as fall protection equipment and should not be used as such.

## Tools Required

- Socket Wrench
- Tape measure
- Chalk
- Chalk line
- String line
- Roofing flat bar
- Drill, Impact Drill
- 1/2-inch-deep socket with drill adaptor
- 7/32-inch jobber bit
- Caulking gun with proper roofing sealant
- 1/4" Drive click torque wrench with 20-200 inch-pound capability



## Parts List

### Mounting Assembly



**Single Mount**  
UL 2703 Tested & Certified  
Tighten to 135 in-lbs



**Double Mount**  
UL 2703 Tested & Certified  
Tighten to 135 in-lbs



**LightSpeed Flashing**  
AC 286 Rain Tested with and  
without sealant



**5/16-inch 18-8 Stainless  
Steel Lag Screw**  
(Select length for minimum  
2 1/2-inch depth into rafter)

**Solar Module**

Solar Module with LightSpeed Corners  
(See Appendix B for list of compatible modules)  
LightSpeed Corners UL 2703 Tested & Certified



5/16-18 x 1 1/2-inch Stainless Steel  
Serrated Flange Bolt  
UL 2703 Tested & Certified  
Tighten to 170 in-lbs

**Bonding**

WEEB-LUG-8.0  
UL 467 and UL 2703 Tested &  
Certified (WEEB Washers are not  
required with this system)



Skirt Bonding Strap  
IlSCO SBJ-516-X ("X" is length)  
UL 2703 Tested & Certified.



Hex Serrated Flange Bolt  
18-8 SS - 5/16-18 x 2-1/2"  
with 1/2" hex head

**Optional Parts**

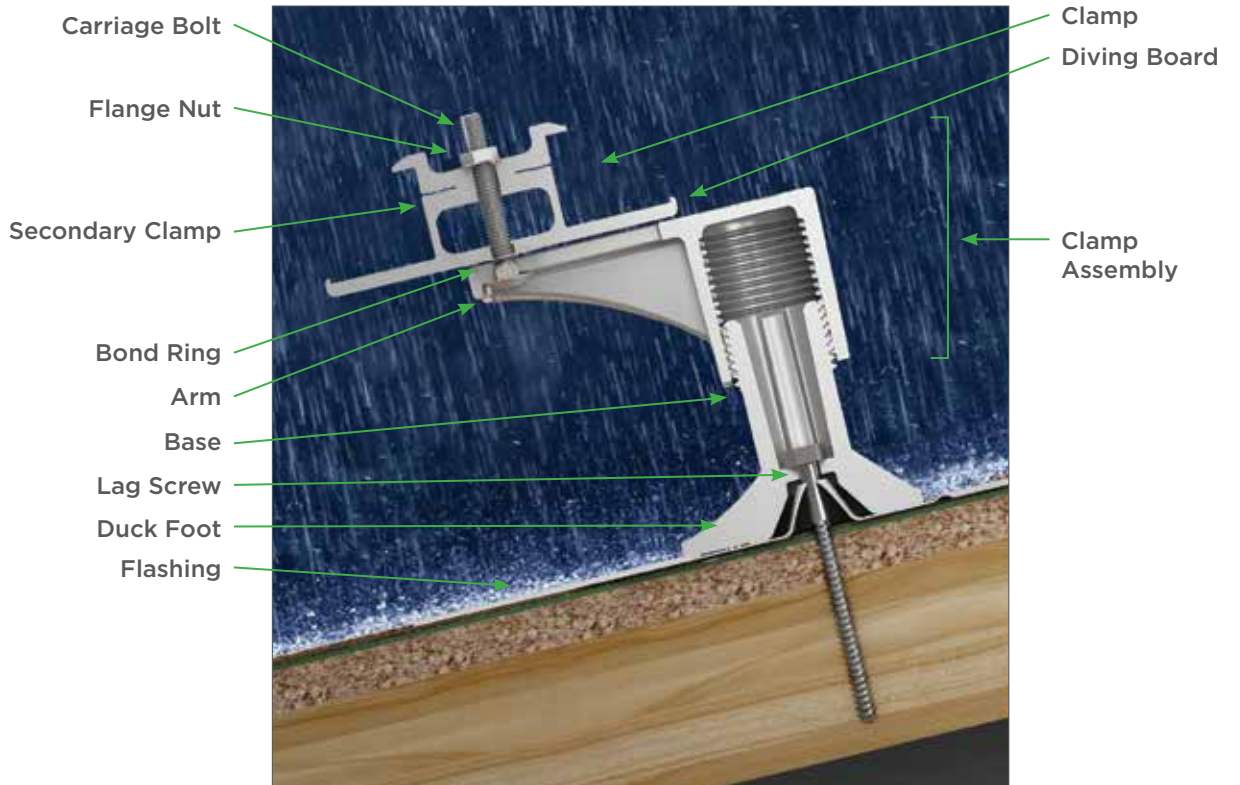
Array Skirt  
Roof pitch >2:12: Not required  
Roof pitch < 2:12: Required  
UL 1703 Fire and UL 2703 Tested  
& Certified Class A

## Product Identification

System identification can be made by looking the Single Mount, which has a label showing the ETL mark with the following information:

- Manufacturer name, trademark, and/or logo
- Model Name
- Date of manufacture not exceeding any three consecutive months

### Mount Assembly Diagram





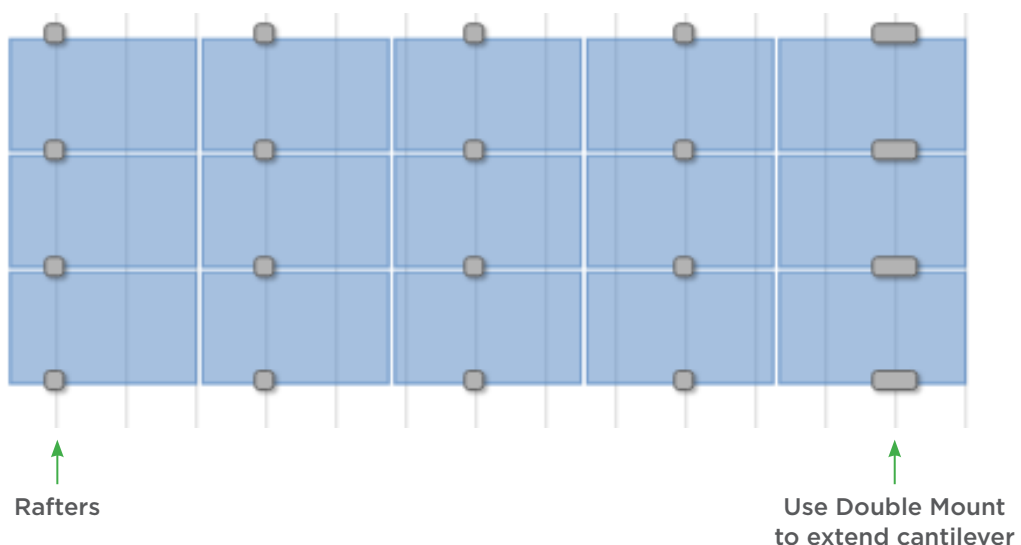
## Step 1 Design Array Layout on Roof

Measuring the perimeter of the array and marking the location of each solar module before drilling any holes will ensure a smooth and efficient installation. Drawing the approximate module locations on the roof will help visualize the array and facilitate the identification of the mounting points. Mark on the roof where the array will be positioned, and select rafter attachment points over roof rafters based on the following criteria:

- Please see Pegasus Solar Design Tool to layout the array, generate an engineering report and bill of materials.
- Solar modules can be installed in portrait, landscape, or mixed orientation arrays.
- Maximum spacing of attachment points is noted in the Span Tables. Follow all local code requirements.
- Modules on the edge of the array must not be cantilevered more than 19 inches or half of span (whichever is less) in either landscape or portrait orientations, as measured from the rafter attachment point to the edge of the module frame (not including corner hinge). However, a Double Mount can be used to increase the cantilever over the rafter attachment point by an additional 7 inches. See Appendix C for Approved Cantilever.
- When a set of Corner Hinges are positioned over an attachment point, either shift the array to avoid interference, use a different pattern of attachment points, or use a Double Mount to support the modules on either side of the Corner Hinges.
- The lower edge of the array will always extend below the lag screw position by 6 inches with no Skirt or 6.5 inches with a Skirt.
- Clamps on the top edge of the module will extend a minimum of 3 5/8" inches above the top edge of the module frame. If required, consult your local fire authority for setback requirements.
- For 60-cell modules, leave a thermal break for expansion and contraction between columns every 10 modules in landscape or 15 modules in portrait. For 72-cell modules, leave a thermal break between columns every 7 modules in landscape by removing both corner bolts after installing.
- Attachment points can be staggered in position up the roof according to local code requirements.

**Example 48" Spans**

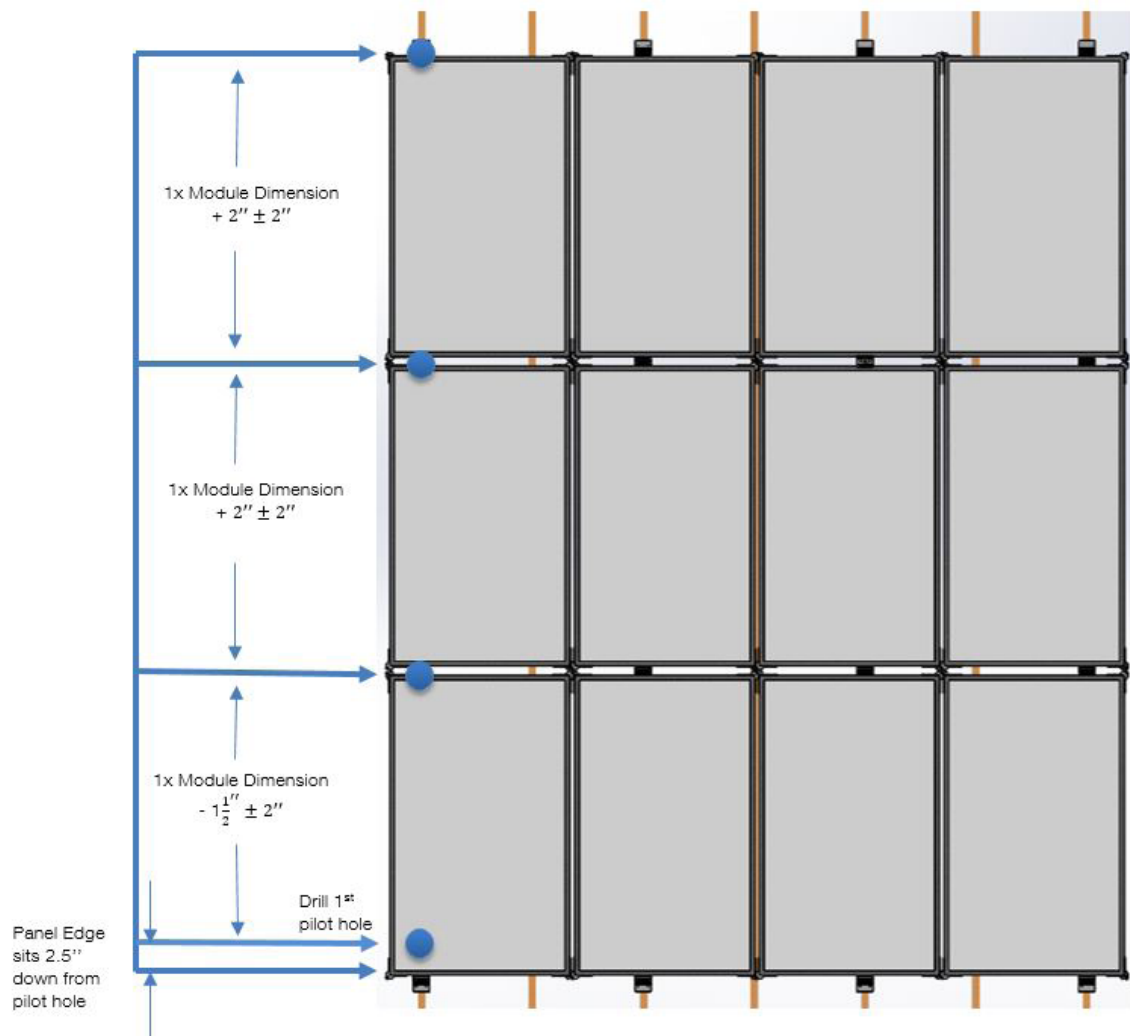
**Clamps extend 3.75 inches above edge of module**



## Step 2

### Mark Rafters and Determine Attachment Points

Find and mark rafters. First row mark mount locations per design. Snap a horizontal line across these marked positions and parallel with the lower roof edge. On perimeter of array: measure up the roof and mark with chalk each row of attachment points. Second row measure from first row lag screw location module length minus 1.5". All other rows measure from lag screw location module length plus 2". There is +/- 2" N/S flexibility on the mount arm so the attachment point can be located to avoid having to cut shingles. Snap horizontal chalk lines. After snapping chalk lines mark and predrill points where a mount Assembly is required per the design.





# Step 3

## Install and Level Mount Assemblies



Determine hole position based on the acceptable flashing location and per the layout marked in Step Two. Holes can be  $\pm 1\frac{1}{2}$  inches from horizontal chalk line to ensure proper location on shingle course. Keeping drill square to the roof, drill a pilot hole 3 inches into roof using a 7/32-inch jobber bit.



Use roofing bar to loosen shingles above attachment point. Slide flashing under shingles and center over hole.



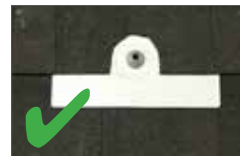
OPTIONAL

Fill hole with an approved roofing sealant.  
**Optional:** run bead of sealant in U-shape on underside of flashing.

### ACCEPTABLE FLASHING LOCATION



Flashing extends under two courses of shingles.



If required, trim shingle to fit around the Base.



Flashing does NOT extend under two courses of shingles. Flashing should not overhang downslope shingle.



Spin Single Mount onto top of Base a minimum of 4 turns, or 1/2 inch down onto Base. One rotation equals 1/8 inch.

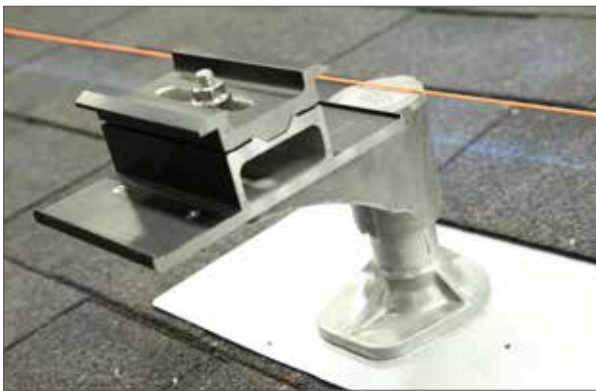


Place Base over flashing cone with the Base Foot facing down the roof. Insert lag screw through Base and use a 1/2-inch-deep socket with a drill to install lag fully. When lag screw is tight, Base should not be able to move or rotate.

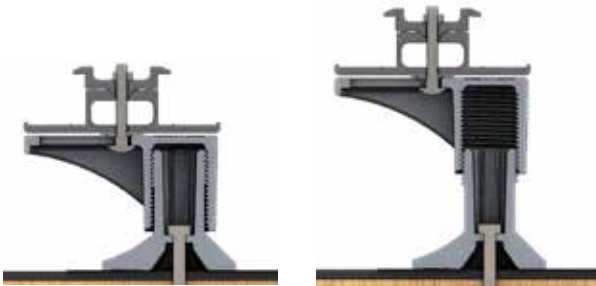
## Step 3 continued

### Leveling Mount Assemblies

Leveling the array is done prior to installing the modules. The threaded connection between the Single Mount and the Base allows the array to be installed at a desired height above the roof and compensates for roof unevenness.



Use a string across exterior Clamp Assemblies to indicate proper height for the middle Clamp Assemblies. Spin middle Clamp Assemblies until they align with the string. Do not exceed maximum height of 5.5 inches or 4 revolutions onto Base.



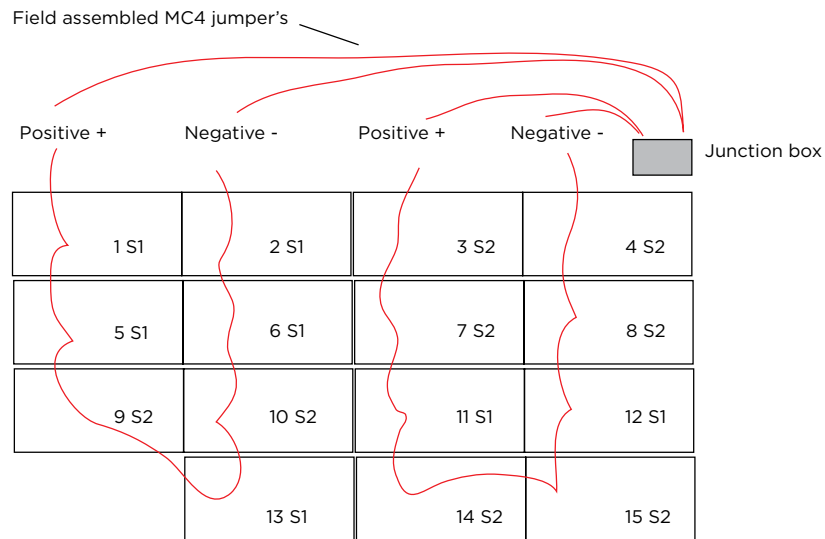
Minimum height: 4 inches or 16 revolutions onto Base. Maximum height: 5.5 inches or 4 revolutions onto Base.

# Step 4 Preparing Modules On the Ground - Wire Management

Recommend that wire management be completed on the ground.

Standard code compliant wire/cable management clips are recommended, such as Heyco Sunrunner, Hellermann Tyton or Wiley clips. Install clips along underside of module frame as needed directing positive and negative leads to adjacent solar panels. It is recommended to perform wire management before the panels are raised onto the roof.

## STRING LAYOUT



Determine best paths for each string and draw onto plans.



Prepare string layout once final layout on the roof is determined.

## Step

## 4

continued

## Wire Management with an Solar Edge Optimizer



Install optimizer in top left or right corner depending on module location in string. Tighten to 11 ft bs.



Slightly braid the module wires and connect to the optimizer. Secure wires to module frame using stainless steel wire clips such as Heyco Sunrunner, Hellerman Tyton or Wiley. Press wires completely into the clip. Do not coil the wires too tightly and address all wires before installing the modules.



Remove the optimizer provided identification stickers and place them on the array layout. Use a marker and label each module consistent with the string layout to ensure proper placement in the array on the roof.



Homeruns should be zip tied together every three feet and attached to the module with wire clips.



Other SolarEdge optimizer models and micro-inverters may require an UL 2703 listed component bracket. Install per manufacturer's instructions.



# Step 5

## Install Modules



For the bottom row of Clamp Assemblies, position the Arms on all Clamp Assemblies facing down the roof, and ensure flange nuts are loose. Place bottom edge of first module into Clamp



Rotate top edge of Mount and lower the top edge of the module onto the Diving Board.



Ensure module frame is fully engaged with bottom edge Mount (within 0.03 in.). Tighten bottom edge Mount to 135 in-lbs. Clamps may not be attached over Corner Hinges.



Rotate top edge Mount until fully engaged with the module. **Do not tighten Mount yet.**



Place second module into bottom edge and top edge Mount, leaving a few inches between modules.



Slide Corner Hinges together. Make sure the threaded finger is lowest.

**Step**  
**5**  
continued

## Install Modules



Insert corner bolt into corner hinge. Hand tighten to 170 in-lbs torque.



Tighten all front edge Mounts to 135 in-lbs.

## Additional Module Rows



For the second and subsequent rows, place bottom edge of module into Clamp. Rotate top edge Mount, and lower the top edge of the module onto the Diving Board. Ensure module frame is fully engaged with bottom edge Mount (within 0.03 inches). Tighten bottom edge Mount to 135 in-lbs. Rotate top edge Mount until fully engaged with the module. **Do not tighten top edge Mounts yet.**

Place second module on bottom and top edge Clamp Assemblies a few inches to the side of the first module, then slide module into hinges. Working from the side of the module may help in this step.

Insert serrated flange bolts in upper and lower Corner Hinges. Start both bolts, then tighten to 170 in-lbs. Tighten bottom edge Single Mount on second module to 135 in-lbs. Continue this pattern until the second and all subsequent module rows are complete. On the last row of modules, tighten all the top edge Clamp Assemblies as you install the modules.

**WARNING:** Stainless fasteners are susceptible to galling or seizing up. To prevent galling, 1) keep stainless steel parts (i.e., the Single Mount nut and bolt) out of sunlight and away from heat, and 2) tighten nuts and bolts with a hand tool to reduce heat caused by friction.

**DO NOT USE POWER TOOLS!**



## Tile Roof Installation Instructions

### Tools Required

- Socket Wrench
- Tape measure
- String line and Chalk
- Gloves
- 2 Roofing flat bars
- Drill, Impact Drill
- 1/2-inch-deep socket with drill adaptor
- 7/32-inch jobber bit
- Caulking gun with proper roofing sealant
- 1/4" Drive click torque wrench with 20-200 inch-pound capability
- Channel Locks



### Parts List



### Step 1 • Design Array Layout on Roof (See composition instructions page 7)

### Step 2 • Mark rafters and determine which tiles to remove

Find rafters and mark tiles with chalk on first row for removal for mount installation per drawings. To locate all other tiles to remove do the following measurements. For second row measure from first row lag screw location module length (width if landscape) minus 1.5". All other rows measure from lag screw location module length (width if landscape) plus 2". Mark tiles to remove with chalk.

### Step 3 • Removing tiles from mount locations



Using flat bars lift the tile above and the tile to the left of the tile to be removed. Remove the tile at the mount location. Save tiles in a safe location to replace any tiles that may break during the installation.

### Step 4 • Determine location of base flashing and sled



Measure 8" from bottom of tile to center of sled and 6" from right edge of tile to center of post slot width to determine where the post will be in reference to the top flashing. Mark with chalk.

### Step 5 • Pilot holes for lag screw



Center the sled over the rafter and using a 7/32" drill bit, drill pilot holes for the lag screws. Drill one hole in the upper row of slots and one hole in the lower row of slots. Sled can be used in either direction to provide clearance from edge of adjacent tile.

## Step 6 ▪ Waterproof and Install Base Flashing

(optional per local AHJ)



Fill pilot holes with approved sealant. Apply sealant in a U shape on the underside of the flashing. Place flashing over pilot holes for lag screws and press down. Waterproof per all applicable codes and standards as required by the AHJ.

## Step 7 ▪ Lag both flashing and sled to rafter



Place Sled in desired location over base flashing and lag screw upper and lower row using a standard impact drill.

## Step 8 ▪ Install Tile Replacement Flashing



Prop up the tile above the mount. Slide tile replace flashing in and align with surrounding tiles. Return tiles to original position.

### Step 9 • Insert post through flashing and drop T-bolt into slot on sled.



Turn the post until T-bolt grabs the sled.



Hand tighten post and follow with channel locks to secure post.

### Step 10 • Seal the post



Run a bead of caulking where flashing meets post.



Place Pegasus provided EPDM collar over the post.

### Step 11 • Install Mount Assembly



Spin clamp assembly on to post a minimum of 4 turns or  $\frac{1}{2}$  inch. Maximum amount of turns onto base is 16 or 2 inches.

*To complete array see page 10, Leveling Mount Assemblies and continue through page 15, Bonding and Grounding.*

### Step 12 • Optional Extension Arm, if necessary



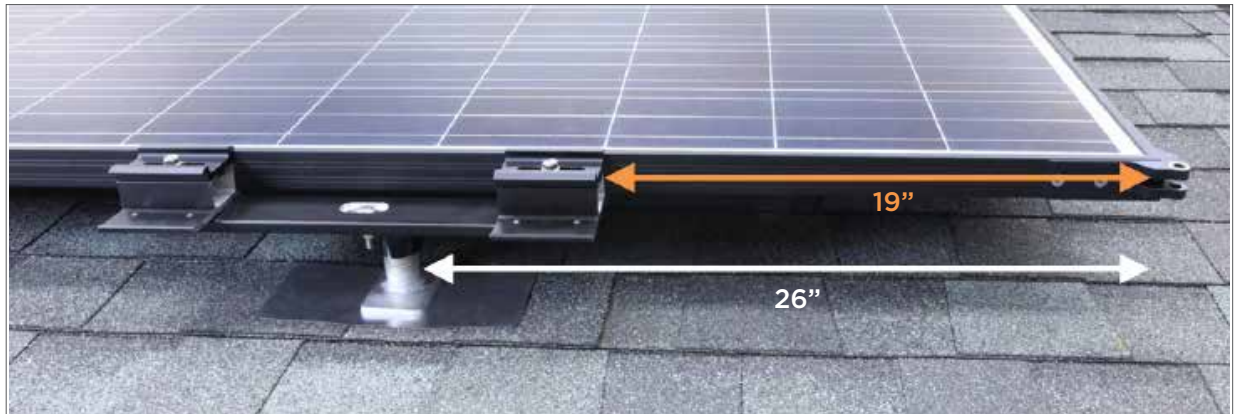
Use the Extension Arm to increase distance up/down the roof. Extension Arm can only be installed facing up or down the roof and must be within 5 degrees of a 12 o'clock or 6 o'clock position. Drop on to post and secure with a Corner Hinge Bolt tighten to 170 in-lb. Spin on Mount and level with adjacent mounts.



## Double Mount Assembly Installation Instructions

The Double Mount is not required for most installations but can be used to:

1. Increase the cantilever distance in landscape or portrait orientations by an additional 7 inches.
2. Provide additional design and spacing options (see Span Tables).
3. Span the Corner Hinges of two modules.



Install and level the Double Mount in the same manner as the normal Single Mount.



Level the Clamps to be even with the other Clamps used in the assembly. The Double Mount is 5/8 inch thick, thus requiring the Arm to be spun on an additional 5 turns compared to a Single Mount, total 13 turns.



After the Clamps are fully engaged with the module frame, hand tighten the carriage bolt connecting the Double Mount to the Arm and the Clamp Bolts to 135 in-lbs torque.

## Optional ▪ Skirt Installation Instructions

The optional skirts come in portrait and landscape dimensions. They are secured to the mount assembly using the same nut that holds the Mount to the module.

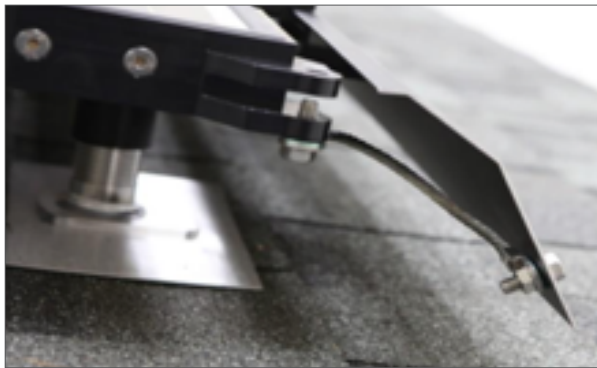


Install skirt by removing first row Mount nut, then place skirt over clamp. Tighten nut loosely. After modules are installed tighten clamp assemblies to 135 in-lbs



Attached the subsequent skirts in a tongue and groove fashion. Starting from one end to the other. The serrated nut will scrape the skirts surface creating a bond to the array.

## Alternate Method of Bonding of Skirts



Install a braided ground strap to either a corner hinge or clamping assembly and skirt, as described in the ILSCO SBJ-516-X (X is length) installation manual. **Note:** UL 2703 does NOT require skirts to be bonded, however bonding may be required by some Authorities Having Jurisdiction (AHJ's).

## Removing a Module



### Step 1

TURN OFF ALL SOLAR AC AND DC DISCONNECTS. Locate row and closest east or west position to bad module to start the removal process.



### Step 2

Using a 1/2 inch ratchet loosen flange nuts on assemblies. DO NOT USE POWER TOOLS. Remove flange nuts and top clamps of assemblies and set aside.



### Step 3

Remove upper and lower corner bolts on the bad module and modules on east or west side of that module depending on which direction is the closest to the module. Placing a hand on frames and clamps of modules for body positioning is ok. DO NOT LEAN ON MODULE CELLS.



### Step 4

When removing bolts from a position above the array place a knee or foot on edge of the module for safe leverage.



## Removing a Module continued



### Step 5

Gently pull the first module in the affected row toward you to release the corners. Disconnect all wires and set module aside.

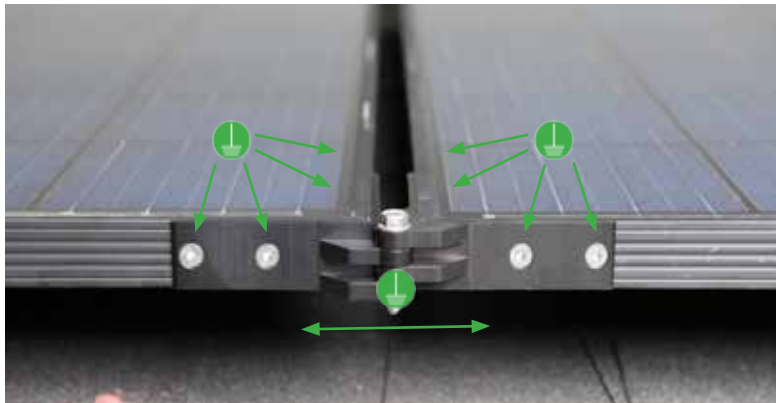


### Step 6

Remove flange nuts and top clamps on the next module in the row per step 2. Repeat Step 5. Continue until non-performing module is removed.

## Bonding Connection Paths to Ground

The LightSpeed Mount provides integrated bonding across an entire array for up to 100 continuous modules. The Corner Hinges provide a redundant bonding path between modules in a given row, and the bonding pins in the Clamp Assemblies provide redundant bonding across rows of modules. This in effect creates a 'mesh' bonded system, maintaining the same potential across the entire array.



Each Corner Hinge is redundantly bonded to the module using four attachment screws. The Corner Hinge Bolts provide two bond paths between all modules within a row.

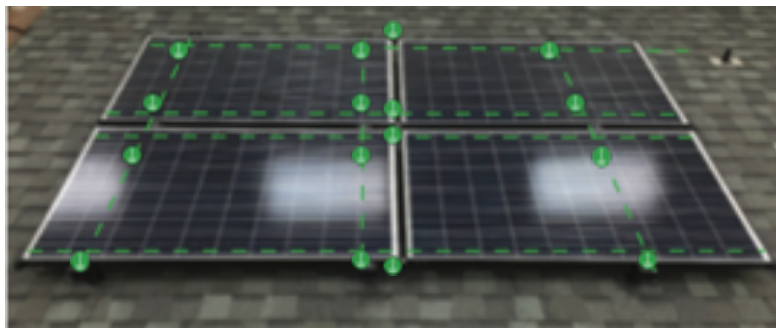


Two Bond Pins on either side of the Clamp Assemblies provide redundant bond paths between rows (i.e. up columns) of modules.



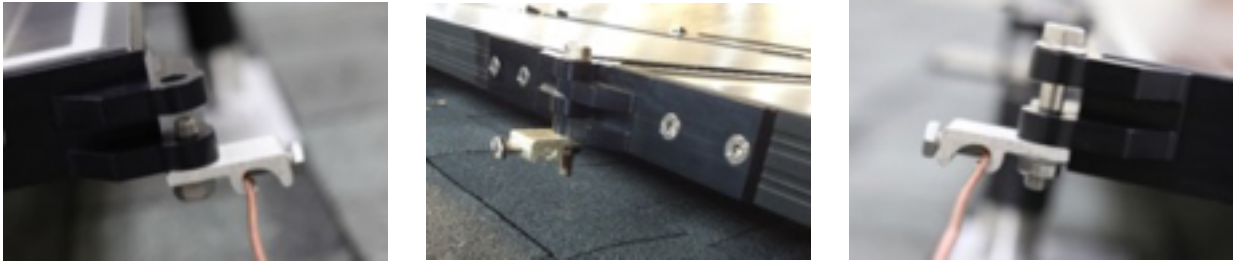
The Bond Ring in the Single Mount bonds the Clamps, Arm, and Hardware, and the threads on the Base bond the Arm to the Base.

Maximum Contiguous Modules	100
Fuse Amp Rating	20 amps
Minimum Gauge Wire	10 awg
Wire Type	Bare Copper
Module Frame Thicknesses	32-40mm

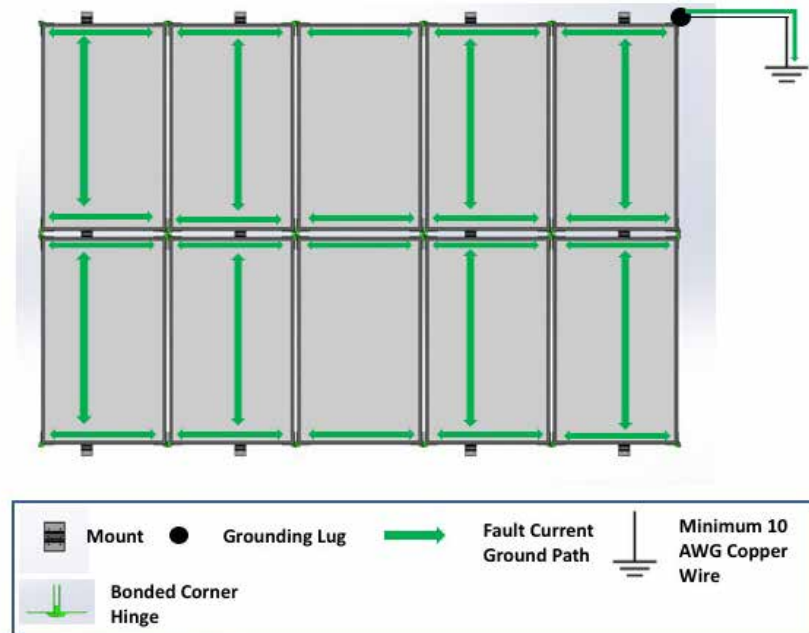


LightSpeed Mount creates a redundant 'mesh' bonded system across the entire array where every row and column of modules is bonded. UL 2703 tested and certified for up to 100 modules in a contiguous array.

## Bonding and Grounding the Array



Attach the grounding lug with a 5/16-inch connection hole to any corner hinge. Use a stainless steel serrated flange bolt for threaded corners or a stainless steel serrated flange bolt and nut on a non-threaded corner. Hand tighten the bolt to 135 in lbs. torque. Lay in equipment ground connector and tighten bolt to 5 ft.-lb. For connections at a joined corner bolt, use a nut. **All bolted connection methods are UL 2703 tested and certified. WEEB Washers are not required with this system.**



Run a NEC-compliant equipment grounding conductor from the ground lug to the junction box GEC. **Keep copper away from aluminum and galvanized steel by securing bare copper conductors in a fashion that maintains a minimum 1/4" separation.**

## Best Practice

- Verify site plans, rafter spacing, and measure working roof space upon arrival of each project to note if additional components are needed.
- Validate all material is on site including modules, mount assemblies, skirts, inverters, grounding lugs and wire management clips, per drawings.
- Initial layout of each array must be measured out correctly and chalk lined to keep straight horizontal rows of mounting assemblies. Double check before drilling.
- Mark module locations on the roof to verify rafter/corner hinge and assembly interference. Double mount assemblies span corner hinges directly over rafters.
- Tighten corner bolts and assemblies to correct torque's and double check before leaving the project.
- Double check all wire management under arrays for code compliance.
- Be sure to insert skirts together fully and that they are level to the roof before tightening assemblies. Debris should be removed from skirts after installation.

## Maintenance

Periodical inspections by qualified persons shall be performed. Following these mechanical checks;

- Check for loose clamp assemblies. If loose clamp assemblies are identified, re-tighten to the specifications above.
- Check for corrosion, if noticeable corrosion is identified that may compromise the safety or function of the mounting system, replace components immediately.
- Check for loose wires, wire clips or zip ties under the system.
- Check for roof damage around mounts, including water/wind damage or critter damage.
- Check for excessive debris under array and remove as necessary.

## Troubleshooting Guide

Routine maintenance involving assembly torque checks, cleaning, and debris removal from under the modules will help keep the system running correctly. Attic inspections of the underside of the roof is recommended yearly, and in addition a licensed electrician is recommended to check components yearly to avoid possible issues within the electrical system.

Reviewing monitoring systems routinely can also identify issues earlier than later. Keep notes on any module or inverter alerts that may come up and notify your installation representative immediately. If any mounting components appear to be broken notify your installation representative immediately.

## Removal of a Pegasus Solar System

**Disconnect the main controlling breaker for the solar electric system, to include turning off all DC and A/C disconnects before removing any components on the roof.**

- **NOTE - DO NOT USE A DRILL MOTOR TO REMOVE HARDWARE, GALLING MAY OCCUR!**
- Loosen upper row of the LightSpeed assembly flange nuts on the array, do not remove. Then remove the corner bolts from the first two modules. Next, loosen the next lower row of LightSpeed assemblies and gently slide first module away from the array.
- **STOP!** Remember to now disconnect the first set of PV wires using a proper connection disconnect tool before removing module from the roof.
- Continue removing modules until only the assemblies are left. Next spin off each assembly to reveal the base, lag screw and flashing. Using a 1/2" socket and hammer drill, remove the lag screw from the rafter. Remove the base and the flashing.
- Flash and seal all roof penetrations
- Clean all assemblies and modules of debris or corrosive materials.
- Inspect all LightSpeed assemblies, corner hinges and hardware for irregularities or fractures during removal and note immediately.
- Please send any question by email to [support@pegasussolar.com](mailto:support@pegasussolar.com)

## Appendix Torque and Pull-Out Specs

# A

### Torque Settings for LightSpeed Mount hardware

Bolt	Torque (in-lbs)	Torque (ft-lbs)	Torque (N-m)
Corner Hinge Bolt	170	14.1	19.2
Single Mount Nut	135	11.3	15.3
Single Mount Nut w/Anti-Seize	112	9.3	12.6
Double Mount Nut	135	11.3	15.3
Double Mount Nut w/Anti-Seize	112	9.3	12.6
Ground Lug Attachment Bolt (or Nut)	120	10	13.6

### Lag pull-out strengths in common lumber (lbs)

Source: American Wood Council, NDS 2005, Table 11.2 A, 11.3.2 A

Wood Type	Specific Gravity	5/16" Shaft per 3" Thread Depth	5/16" Shaft per 1" Thread Depth
Douglas Fir, Larch	.50	798	266
Douglas Fir, South	.46	705	235
Engelmann Spruce, Lodgepole Pine*	.46	705	235
Hem, Fir	.43	636	212
Hem, Fir (North)	.46	705	235
Southern Pine	.55	921	307
Spruce, Pine, Fir	.42	615	205
Spruce, Pine, Fir**	.50	798	266

\* MSR 1650 f and higher.

\*\* E of 2 million PSI and higher grades of MSR and MEL.

## Appendix B LightSpeed Mount Compatible Modules for UL2703 Electrical Bonding/Grounding

PV Manufacturer	Module Series
AU Optronics (BenQ)	PM Series
Canadian	CS6X-P
	CS6P-P
	CS6P-M
	CS6-M All Black
	CS6-K
ET Solar	ET Series
Hanwha	HSL-60S
	HSL-72S
Hyundai	RF, RG, TF, TG, RI, TI-Series Series
Jinko	JKM Series, MX60, MX72. MKT, Eagle
LG	Mono X
	Neon
ReneSola	JC Series
SolarWorld	SunModule Plus
	SunModule Pro
	SunModule Protect
	SunModule XL
Suniva	OPT 72 38mm
	OPT 60 40mm, 35mm
Trina	PA05, PD05, PD14
	TallMax
UpSolar	UP-M Series
Yingli	YGE 60
	Panda



**Appendix C** Approved Module Load Characteristics

**C**

**Hyundai**

HiS-MxxxRG, RG(BF), RG(BK), TG, TG(BF), KG, KG(BF), KG(BK)

HiS-SxxxRG, RG(BF), RG(BK), TG, TG(BF), KG, KG(BF), KG(BK)

-2400 (Pa) uplift, 2400 (Pa) downforce with 19” cantilever, 6ft spacing maximum

-2400 (Pa) uplift, 5400 (Pa) downforce with 12” cantilever, 4ft spacing maximum

**LG**

MonoX, Neon2 G4 Frame

Module Orientation	Span of Mount	Max Cantilever	Max Load		Design Load	
			Downforce	Uplift	Downforce	Uplift
Landscape	4 ft	13.5”	113 psf (5400Pa)	113 psf (5400Pa)	75 psf (3600Pa)	75 psf (3600Pa)
	6 ft	19”	50 psf (2400Pa)	50 psf (2400Pa)	33 psf (1600Pa)	33 psf (1600Pa)
Portrait	4 ft	18”	83 psf (4000Pa)	83 psf (4000Pa)	56 psf (2667Pa)	56 psf (2667Pa)

**Trina**

PD05.05, PA05.05 Series modules

-2400 (Pa) uplift, 2400 (Pa) downforce with 19” cantilever (max)

-2400 (Pa) uplift, 5400 (Pa) downforce with 12” cantilever (max)

Appendix Span Tables

D

Landscape Orientation - ASCE 7-10 - Interior Mounts (3.29 ft Tributary Width)

Snow Load	Exposure Category	Roof Angle	Roof Zone	Basic Wind Speed, V (mph)											
				110	115	120	125	130	140	150	160	170	180		
0 PSF	B	0 to 7 Degrees	1	72	72	72	72	72	72	72	72	72	64	64	
			2	72	72	72	64	64	60	48	36	36	0		
			3	60	48	48	48	36	36	0	0	0	0		
		8 to 27 Degrees	1	72	72	72	72	72	72	72	72	72	72	72	64
			2	72	72	72	72	64	60	48	48	36	36	0	
			3	64	60	48	48	48	36	0	0	0	0		
		28 to 45 Degrees	1	72	72	72	72	72	72	72	72	64	64	64	60
			2	72	72	72	72	72	72	72	64	64	48	48	
			3	72	72	72	72	72	72	72	64	64	48	48	
	C	0 to 7 Degrees	1	72	72	72	72	72	64	64	64	60	48	48	
			2	64	64	60	48	48	36	0	0	0	0		
			3	36	36	36	0	0	0	0	0	0	0		
		8 to 27 Degrees	1	72	72	72	72	72	72	72	64	64	48	48	
			2	64	64	60	48	48	36	36	0	0	0		
			3	48	36	36	0	0	0	0	0	0	0		
		28 to 45 Degrees	1	72	72	72	72	72	72	64	64	48	48	36	
			2	72	72	72	72	64	60	48	36	36	36	36	
			3	72	72	72	72	64	60	48	36	36	36	36	
	D	0 to 7 Degrees	1	72	72	72	72	64	64	48	48	36	36		
			2	60	48	48	36	36	0	0	0	0			
			3	36	0	0	0	0	0	0	0	0			
		8 to 27 Degrees	1	72	72	72	72	72	64	60	48	48	36		
			2	60	48	48	48	36	36	0	0	0			
			3	36	0	0	0	0	0	0	0	0			
28 to 45 Degrees		1	72	72	72	64	64	60	48	48	36	36			
		2	72	72	64	64	60	48	36	36	0	0			
		3	72	72	64	64	60	48	36	36	0	0			
1-15 PSF	B	0 to 7 Degrees	1	72	72	72	72	72	72	72	72	72	64	64	
			2	72	72	72	64	64	60	48	36	36	0		
			3	60	48	48	48	36	36	0	0	0	0		
		8 to 27 Degrees	1	72	72	72	72	72	72	72	72	72	64	64	
			2	72	72	72	72	64	60	48	48	36	36		
			3	64	60	48	48	48	36	0	0	0	0		
		28 to 45 Degrees	1	72	72	72	72	72	72	72	64	64	64	60	
			2	72	72	72	72	72	72	64	64	48	48		
			3	72	72	72	72	72	72	64	64	48	48		
	C	0 to 7 Degrees	1	72	72	72	72	72	64	64	60	48	48		
			2	64	64	60	48	48	36	0	0	0			
			3	36	36	36	0	0	0	0	0	0			
		8 to 27 Degrees	1	72	72	72	72	72	64	64	64	48	48		
			2	64	64	60	48	48	36	36	0	0			
			3	48	36	36	0	0	0	0	0	0			
		28 to 45 Degrees	1	72	72	72	72	72	64	64	48	48	36		
			2	72	72	72	72	64	60	48	36	36	36		
			3	72	72	72	72	64	60	48	36	36	36		
	D	0 to 7 Degrees	1	72	72	72	72	64	64	48	48	36	36		
			2	60	48	48	36	36	0	0	0	0			
			3	36	0	0	0	0	0	0	0	0			
		8 to 27 Degrees	1	72	72	72	72	64	64	60	48	48	36		
			2	60	48	48	48	36	36	0	0	0			
			3	36	0	0	0	0	0	0	0	0			
28 to 45 Degrees		1	72	72	72	64	64	60	48	48	36	36			
		2	72	72	64	64	60	48	36	36	0	0			
		3	72	72	64	64	60	48	36	36	0	0			

Appendix Span Tables

D

Landscape Orientation - ASCE 7-10 - Interior Mounts (3.29 ft Tributary Width)

Snow Load	Exposure Category	Roof Angle	Roof Zone	Basic Wind Speed, V (mph)										
				110	115	120	125	130	140	150	160	170	180	
16-20 PSF	B	0 to 7 Degrees	1	64	64	64	64	64	64	64	64	64	64	64
			2	64	64	64	64	64	60	48	36	36	0	
			3	60	48	48	48	36	36	0	0	0	0	
		8 to 27 Degrees	1	64	64	64	64	64	64	64	64	64	64	64
			2	64	64	64	64	64	60	48	48	36	36	
			3	64	60	48	48	48	36	0	0	0	0	
		28 to 45 Degrees	1	72	72	72	72	72	72	72	64	64	64	60
			2	72	72	72	72	72	72	72	64	64	48	48
			3	72	72	72	72	72	72	72	64	64	48	48
	C	0 to 7 Degrees	1	64	64	64	64	64	64	64	64	60	48	48
			2	64	64	60	48	48	36	0	0	0	0	
			3	36	36	36	0	0	0	0	0	0	0	
		8 to 27 Degrees	1	64	64	64	64	64	64	64	64	60	48	48
			2	64	64	60	48	48	36	36	0	0	0	
			3	48	36	36	0	0	0	0	0	0	0	
		28 to 45 Degrees	1	72	72	72	72	64	64	64	48	48	36	36
			2	72	72	72	72	64	60	48	36	36	36	36
			3	72	72	72	72	64	60	48	36	36	36	36
	D	0 to 7 Degrees	1	64	64	64	64	64	64	48	48	36	36	
			2	60	48	48	36	36	0	0	0	0		
			3	36	0	0	0	0	0	0	0	0		
		8 to 27 Degrees	1	64	64	64	64	64	64	60	48	48	36	
			2	60	48	48	48	36	36	0	0	0		
			3	36	0	0	0	0	0	0	0	0		
28 to 45 Degrees		1	72	72	64	64	64	60	48	48	36	36		
		2	72	72	64	64	60	48	36	36	0	0		
		3	72	72	64	64	60	48	36	36	0	0		
21-25 PSF	B	0 to 7 Degrees	1	64	64	64	64	64	64	64	64	64	64	
			2	64	64	64	64	64	60	48	36	36	0	
			3	60	48	48	48	36	36	0	0	0	0	
		8 to 27 Degrees	1	64	64	64	64	64	64	64	64	64	64	60
			2	64	64	64	64	64	60	48	48	36	36	
			3	64	60	48	48	48	36	0	0	0	0	
		28 to 45 Degrees	1	72	72	72	72	72	72	72	64	64	64	60
			2	72	72	72	72	72	72	72	64	64	48	48
			3	72	72	72	72	72	72	72	64	64	48	48
	C	0 to 7 Degrees	1	64	64	64	64	64	64	64	64	60	48	48
			2	64	64	60	48	48	36	0	0	0	0	
			3	36	36	36	0	0	0	0	0	0	0	
		8 to 27 Degrees	1	64	64	64	64	64	64	64	64	60	48	48
			2	64	64	60	48	48	36	36	0	0	0	
			3	48	36	36	0	0	0	0	0	0	0	
		28 to 45 Degrees	1	72	72	72	64	64	64	60	48	48	36	36
			2	72	72	72	64	64	60	48	36	36	36	36
			3	72	72	72	64	64	60	48	36	36	36	36
	D	0 to 7 Degrees	1	64	64	64	64	64	64	48	48	36	36	
			2	60	48	48	36	36	0	0	0	0		
			3	36	0	0	0	0	0	0	0	0		
		8 to 27 Degrees	1	64	64	64	64	64	60	60	48	48	36	
			2	60	48	48	48	36	36	0	0	0		
			3	36	0	0	0	0	0	0	0	0		
28 to 45 Degrees		1	72	64	64	64	64	60	48	48	36	36		
		2	72	64	64	64	60	48	36	36	0	0		
		3	72	64	64	64	60	48	36	36	0	0		

Appendix Span Tables

D

Landscape Orientation - ASCE 7-10 - Interior Mounts (3.29 ft Tributary Width)

Snow Load	Exposure Category	Roof Angle	Roof Zone	Basic Wind Speed, V (mph)										
				110	115	120	125	130	140	150	160	170	180	
26-30 PSF	B	0 to 7 Degrees	1	64	64	64	64	64	64	64	64	64	64	64
			2	64	64	64	64	64	60	48	36	36	0	
			3	60	48	48	48	36	36	0	0	0	0	
		8 to 27 Degrees	1	64	64	64	64	64	64	64	64	60	60	60
			2	64	64	64	64	64	60	48	48	36	36	
			3	64	60	48	48	48	36	0	0	0	0	
		28 to 45 Degrees	1	72	72	72	72	72	64	64	64	64	64	60
			2	72	72	72	72	72	64	64	64	48	48	
			3	72	72	72	72	72	64	64	64	48	48	
	C	0 to 7 Degrees	1	64	64	64	64	64	64	64	60	48	48	
			2	64	64	60	48	48	36	0	0	0	0	
			3	36	36	36	0	0	0	0	0	0	0	
		8 to 27 Degrees	1	64	64	64	64	60	60	60	48	48	48	
			2	64	64	60	48	48	36	36	0	0	0	
			3	48	36	36	0	0	0	0	0	0	0	
		28 to 45 Degrees	1	72	72	64	64	64	64	60	48	48	36	
			2	72	72	64	64	64	60	48	36	36	36	
			3	72	72	64	64	64	60	48	36	36	36	
	D	0 to 7 Degrees	1	64	64	64	64	64	64	48	48	36	36	
			2	60	48	48	36	36	0	0	0	0	0	
			3	36	0	0	0	0	0	0	0	0	0	
		8 to 27 Degrees	1	64	64	60	60	60	60	48	48	48	36	
			2	60	48	48	48	36	36	0	0	0	0	
			3	36	0	0	0	0	0	0	0	0	0	
28 to 45 Degrees		1	64	64	64	64	64	60	48	48	36	36		
		2	64	64	64	64	60	48	36	36	0	0		
		3	64	64	64	64	60	48	36	36	0	0		
31-35 PSF	B	0 to 7 Degrees	1	60	60	60	60	60	60	60	60	60	60	
			2	60	60	60	60	60	60	48	36	36	0	
			3	60	48	48	48	36	36	0	0	0	0	
		8 to 27 Degrees	1	60	60	60	60	60	60	60	48	48	48	
			2	60	60	60	60	60	60	48	48	36	36	
			3	60	60	48	48	48	36	0	0	0	0	
	28 to 45 Degrees	1	72	72	72	72	72	64	64	64	60	60		
		2	72	72	72	72	72	64	64	64	48	48		
		3	72	72	72	72	72	64	64	64	48	48		
	C	0 to 7 Degrees	1	60	60	60	60	60	60	60	60	48	48	
			2	60	60	60	48	48	36	0	0	0	0	
			3	36	36	36	0	0	0	0	0	0	0	
8 to 27 Degrees		1	60	60	60	60	60	48	48	48	48	48		
		2	60	60	60	48	48	36	36	0	0	0		
		3	48	36	36	0	0	0	0	0	0	0		
28 to 45 Degrees	1	64	64	64	64	64	60	60	48	48	36			
	2	64	64	64	64	64	60	48	36	36	36			
	3	64	64	64	64	64	60	48	36	36	36			
D	0 to 7 Degrees	1	60	60	60	60	60	60	48	48	36	36		
		2	60	48	48	36	36	0	0	0	0	0		
		3	36	0	0	0	0	0	0	0	0	0		
	8 to 27 Degrees	1	60	60	60	48	48	48	48	48	48	36		
		2	60	48	48	48	36	36	0	0	0	0		
		3	36	0	0	0	0	0	0	0	0	0		
28 to 45 Degrees	1	64	64	64	64	60	60	48	48	36	36			
	2	64	64	64	64	60	48	36	36	0	0			
	3	64	64	64	64	60	48	36	36	0	0			

Appendix Span Tables

D

Landscape Orientation - ASCE 7-10 - Interior Mounts (3.29 ft Tributary Width)

Snow Load	Exposure Category	Roof Angle	Roof Zone	Basic Wind Speed, V (mph)										
				110	115	120	125	130	140	150	160	170	180	
36-40 PSF	B	0 to 7 Degrees	1	48	48	48	48	48	48	48	48	48	48	48
			2	48	48	48	48	48	48	48	48	36	36	0
			3	48	48	48	48	36	36	0	0	0	0	0
		8 to 27 Degrees	1	48	48	48	48	48	48	48	48	48	48	48
			2	48	48	48	48	48	48	48	48	48	36	36
			3	48	48	48	48	48	36	0	0	0	0	0
		28 to 45 Degrees	1	64	64	64	64	64	64	64	64	60	60	48
			2	64	64	64	64	64	64	64	64	60	48	48
			3	64	64	64	64	64	64	64	64	60	48	48
	C	0 to 7 Degrees	1	48	48	48	48	48	48	48	48	48	48	48
			2	48	48	48	48	48	36	0	0	0	0	0
			3	36	36	36	0	0	0	0	0	0	0	0
		8 to 27 Degrees	1	48	48	48	48	48	48	48	48	48	48	48
			2	48	48	48	48	48	36	36	0	0	0	0
			3	48	36	36	0	0	0	0	0	0	0	0
		28 to 45 Degrees	1	64	64	64	64	64	64	60	48	48	48	36
			2	64	64	64	64	64	64	60	48	36	36	36
			3	64	64	64	64	64	64	60	48	36	36	36
	D	0 to 7 Degrees	1	48	48	48	48	48	48	48	48	48	36	36
			2	48	48	48	36	36	0	0	0	0	0	0
			3	36	0	0	0	0	0	0	0	0	0	0
		8 to 27 Degrees	1	48	48	48	48	48	48	48	48	48	48	36
			2	48	48	48	48	36	36	0	0	0	0	0
			3	36	0	0	0	0	0	0	0	0	0	0
28 to 45 Degrees		1	64	64	64	60	60	48	48	48	48	36	36	
		2	64	64	64	60	60	48	36	36	0	0	0	
		3	64	64	64	60	60	48	36	36	0	0	0	
40-50 PSF	B	0 to 7 Degrees	1	48	48	48	48	48	48	48	48	48	48	48
			2	48	48	48	48	48	48	48	48	36	36	0
			3	48	48	48	48	36	36	0	0	0	0	0
		8 to 27 Degrees	1	48	48	48	48	48	48	48	48	48	48	48
			2	48	48	48	48	48	48	48	48	48	36	36
			3	48	48	48	48	48	36	0	0	0	0	0
		28 to 45 Degrees	1	48	48	48	48	48	48	48	48	48	48	48
			2	48	48	48	48	48	48	48	48	48	48	48
			3	48	48	48	48	48	48	48	48	48	48	48
	C	0 to 7 Degrees	1	48	48	48	48	48	48	48	48	48	48	48
			2	48	48	48	48	48	36	0	0	0	0	0
			3	36	36	36	0	0	0	0	0	0	0	0
		8 to 27 Degrees	1	48	48	48	48	48	48	48	48	48	48	48
			2	48	48	48	48	48	36	36	0	0	0	0
			3	48	36	36	0	0	0	0	0	0	0	0
		28 to 45 Degrees	1	48	48	48	48	48	48	48	48	48	48	36
			2	48	48	48	48	48	48	48	48	36	36	36
			3	48	48	48	48	48	48	48	48	36	36	36
	D	0 to 7 Degrees	1	48	48	48	48	48	48	48	48	48	36	36
			2	48	48	48	36	36	0	0	0	0	0	0
			3	36	0	0	0	0	0	0	0	0	0	0
		8 to 27 Degrees	1	48	48	48	48	48	48	48	48	48	48	36
			2	48	48	48	48	36	36	0	0	0	0	0
			3	36	0	0	0	0	0	0	0	0	0	0
28 to 45 Degrees		1	48	48	48	48	48	48	48	48	48	36	36	
		2	48	48	48	48	48	48	48	48	36	36	0	
		3	48	48	48	48	48	48	48	48	36	36	0	

Appendix Span Tables

D

Landscape Orientation - ASCE 7-10 - Interior Mounts (3.29 ft Tributary Width)

Snow Load	Exposure Category	Roof Angle	Roof Zone	Basic Wind Speed, V (mph)										
				110	115	120	125	130	140	150	160	170	180	
51-70 PSF	B	0 to 7 Degrees	1	36	36	36	36	36	36	36	36	36	36	36
			2	36	36	36	36	36	36	36	36	36	36	0
			3	36	36	36	36	36	36	36	0	0	0	0
		8 to 27 Degrees	1	36	36	36	36	36	36	36	36	36	36	36
			2	36	36	36	36	36	36	36	36	36	36	36
			3	36	36	36	36	36	36	36	0	0	0	0
		28 to 45 Degrees	1	36	36	36	36	36	36	36	36	36	36	36
			2	36	36	36	36	36	36	36	36	36	36	36
			3	36	36	36	36	36	36	36	36	36	36	36
	C	0 to 7 Degrees	1	36	36	36	36	36	36	36	36	36	36	36
			2	36	36	36	36	36	36	0	0	0	0	0
			3	36	36	36	0	0	0	0	0	0	0	0
		8 to 27 Degrees	1	36	36	36	36	36	36	36	36	36	36	36
			2	36	36	36	36	36	36	36	36	0	0	0
			3	36	36	36	0	0	0	0	0	0	0	0
		28 to 45 Degrees	1	36	36	36	36	36	36	36	36	36	36	36
			2	36	36	36	36	36	36	36	36	36	36	36
			3	36	36	36	36	36	36	36	36	36	36	36
	D	0 to 7 Degrees	1	36	36	36	36	36	36	36	36	36	36	36
			2	36	36	36	36	36	0	0	0	0	0	0
			3	36	0	0	0	0	0	0	0	0	0	0
		8 to 27 Degrees	1	36	36	36	36	36	36	36	36	36	36	36
			2	36	36	36	36	36	36	36	0	0	0	0
			3	36	0	0	0	0	0	0	0	0	0	0
28 to 45 Degrees		1	36	36	36	36	36	36	36	36	36	36	36	
		2	36	36	36	36	36	36	36	36	36	0	0	
		3	36	36	36	36	36	36	36	36	36	0	0	
71-90 PSF	B	0 to 7 Degrees	1	36	36	36	36	36	36	36	36	36	36	
			2	36	36	36	36	36	36	36	36	36	0	
			3	36	36	36	36	36	36	36	0	0	0	0
		8 to 27 Degrees	1	24	24	24	24	24	24	24	24	24	24	24
			2	24	24	24	24	24	24	24	24	24	24	24
			3	24	24	24	24	24	24	24	0	0	0	0
		28 to 45 Degrees	1	32	32	32	32	32	32	32	32	32	32	32
			2	32	32	32	32	32	32	32	32	32	32	32
			3	32	32	32	32	32	32	32	32	32	32	32
	C	0 to 7 Degrees	1	36	36	36	36	36	36	36	36	36	36	36
			2	36	36	36	36	36	36	0	0	0	0	0
			3	36	36	36	0	0	0	0	0	0	0	0
		8 to 27 Degrees	1	24	24	24	24	24	24	24	24	24	24	24
			2	24	24	24	24	24	24	24	24	0	0	0
			3	24	24	24	0	0	0	0	0	0	0	0
		28 to 45 Degrees	1	32	32	32	32	32	32	32	32	32	32	32
			2	32	32	32	32	32	32	32	32	32	32	32
			3	32	32	32	32	32	32	32	32	32	32	32
	D	0 to 7 Degrees	1	36	36	36	36	36	36	36	36	36	36	36
			2	36	36	36	36	36	36	0	0	0	0	0
			3	36	0	0	0	0	0	0	0	0	0	0
		8 to 27 Degrees	1	24	24	24	24	24	24	24	24	24	24	24
			2	24	24	24	24	24	24	24	24	0	0	0
			3	24	0	0	0	0	0	0	0	0	0	0
28 to 45 Degrees		1	32	32	32	32	32	32	32	32	32	32	32	
		2	32	32	32	32	32	32	32	32	32	0	0	
		3	32	32	32	32	32	32	32	32	32	0	0	

Appendix Span Tables

D

Portrait Orientation - ASCE 7-10 - Interior Mounts (5.5 ft Tributary Width)

Snow Load	Exposure Category	Roof Angle	Roof Zone	Basic Wind Speed, V (mph)										
				110	115	120	125	130	140	150	160	170	180	
0 PSF	B	0 to 7 Degrees	1	48 / *72	48 / *72	48 / *72	48 / *72	48 / *72	48 / *64	48 / *60	48	36	36	
			2	48 / *60	48	48	36	36	36	32	24	24	16	
			3	36	32	32	24	24	16	16	16	16	12	
		8 to 27 Degrees	1	48 / *72	48 / *72	48 / *72	48 / *72	48 / *72	48 / *72	48 / *60	48	48	36	
			2	48 / *60	48	48	36	36	36	32	24	24	16	
			3	36	36	32	24	24	24	16	16	16	12	
		28 to 45 Degrees	1	48 / *72	48 / *72	48 / *72	48 / *72	48 / *64	48 / *60	48	48	36	36	36
			2	48 / *72	48 / *72	48 / *64	48 / *60	48	48	36	36	32	24	
			3	48 / *72	48 / *72	48 / *64	48 / *60	48	48	36	36	32	24	
	C	0 to 7 Degrees	1	48 / *72	48 / *72	48 / *64	48 / *60	48	48	36	36	32	24	
			2	36	36	36	32	24	24	16	16	16	12	
			3	24	24	16	16	16	16	12	12	0	0	
		8 to 27 Degrees	1	48 / *72	48 / *72	48 / *64	48 / *64	48	48	36	36	32	24	
			2	36	36	36	32**	24**	24	16	16	16	16	
			3	24	24	24	16	16	16	12	12	12	0	
		28 to 45 Degrees	1	48 / *64	48 / *60	48	48	48	48	36	36	32	24	24
			2	48	48	48	36	36	36	32	24	24	16	
			3	48	48	48	36	36	36	32	24	24	16	
	D	0 to 7 Degrees	1	48 / *64	48 / *60	48	48	48	36	32	24	24	24	
			2	36	32	24	24	24	16	16	16	12	12	
			3	16	16	16	16	16	12	12	0	0	0	
		8 to 27 Degrees	1	48 / *64	48 / *64	48	48	48	36	36	32	24	24	
			2	36	32	24	24	24	16	16	16	12	12	
			3	24	16	16	16	16	12	12	0	0	0	
28 to 45 Degrees		1	48	48	48	36	36	36	32	24	24	16		
		2	48	36	36	36	36	24	24	24	16	16		
		3	48	36	36	36	36	24	24	24	16	16		
1-15 PSF	B	0 to 7 Degrees	1	48 / *72	48 / *72	48 / *72	48 / *72	48 / *72	48 / *64	48 / *60	48	36	36	
			2	48 / *60	48	48	36	36	36	32	24	24	16	
			3	36	32	32	24	24	16	16	16	16	12	
		8 to 27 Degrees	1	48 / *72	48 / *72	48 / *72	48 / *72	48 / *72	48 / *72	48 / *60	48	48	36	
			2	48 / *60	48	48	36	36	36	32	24	24	16	
			3	36	36	32	24	24	24	16	16	16	12	
		28 to 45 Degrees	1	48 / *72	48 / *72	48 / *72	48 / *72	48 / *64	48 / *60	48	48	36	36	36
			2	48 / *72	48 / *72	48 / *64	48 / *60	48	48	36	36	32	24	
			3	48 / *72	48 / *72	48 / *64	48 / *60	48	48	36	36	32	24	
	C	0 to 7 Degrees	1	48 / *72	48 / *72	48 / *64	48 / *60	48	48	36	36	32	24	
			2	36	36	36	32	24	24	16	16	16	12	
			3	24	24	16	16	16	16	12	12	0	0	
		8 to 27 Degrees	1	48 / *72	48 / *72	48 / *64	48 / *64	48	48	36	36	32	24	
			2	36	36	36	32**	24**	24	16	16	16	16	
			3	24	24	24	16	16	16	12	12	12	0	
		28 to 45 Degrees	1	48 / *64	48 / *60	48	48	48	36	36	32	24	24	
			2	48	48	48	36	36	36	32	24	24	16	
			3	48	48	48	36	36	36	32	24	24	16	
	D	0 to 7 Degrees	1	48 / *64	48 / *60	48	48	48	36	32	24	24	24	
			2	36	32	24	24	24	16	16	16	12	12	
			3	16	16	16	16	16	12	12	0	0	0	
		8 to 27 Degrees	1	48 / *64	48 / *64	48	48	48	36	36	32	24	24	
			2	36	32	24	24	24	16	16	16	12	12	
			3	24	16	16	16	16	12	12	0	0	0	
28 to 45 Degrees		1	48	48	48	36	36	36	32	24	24	16		
		2	48	36	36	36	36	24	24	24	16	16		
		3	48	36	36	36	36	24	24	24	16	16		



Appendix Span Tables

D

Portrait Orientation - ASCE 7-10 - Interior Mounts (5.5 ft Tributary Width)

Snow Load	Exposure Category	Roof Angle	Roof Zone	Basic Wind Speed, V (mph)										
				110	115	120	125	130	140	150	160	170	180	
16-20 PSF	B	0 to 7 Degrees	1	48 /*64	48 /*64	48 /*64	48 /*64	48 /*64	48 /*64	48 /*64	48 /*60	48	36	36
			2	48 /*60	48	48	36	36	36	32	24	24	16	
			3	36	32	32	24	24	16	16	16	16	12	
		8 to 27 Degrees	1	48 /*60	48 /*60	48 /*60	48 /*60	48 /*60	48 /*60	48 /*60	48 /*60	48	48	36
			2	48 /*60	48	48	36	36	36	32	24	24	16	
			3	36	36	32	24	24	24	16	16	16	12	
		28 to 45 Degrees	1	48 /*64	48 /*64	48 /*64	48 /*64	48 /*64	48 /*60	48	48	36	36	36
			2	48 /*64	48 /*64	48 /*64	48 /*60	48	48	36	36	32	24	
			3	48 /*64	48 /*64	48 /*64	48 /*60	48	48	36	36	32	24	
	C	0 to 7 Degrees	1	48 /*64	48 /*64	48 /*64	48 /*60	48	48	36	36	32	24	
			2	36	36	36	32	24	24	16	16	16	12	
			3	24	24	16	16	16	16	12	12	0	0	
		8 to 27 Degrees	1	48 /*60	48 /*60	48 /*60	48 /*60	48	48	36	36	32	24	
			2	36	36	36	32**	24**	24	16	16	16	16	
			3	24	24	24	16	16	16	12	12	12	0	
		28 to 45 Degrees	1	48 /*64	48 /*60	48	48	48	36	36	36	32	24	24
			2	48	48	48	36	36	36	32	24	24	16	
			3	48	48	48	36	36	36	32	24	24	16	
	D	0 to 7 Degrees	1	48 /*64	48 /*60	48	48	48	36	32	24	24	24	
			2	36	32	24	24	24	16	16	16	12	12	
			3	16	16	16	16	16	12	12	0	0	0	
		8 to 27 Degrees	1	48 /*60	48 /*60	48	48	48	36	36	32	24	24	
			2	36	32	24	24	24	16	16	16	12	12	
			3	24	16	16	16	16	12	12	0	0	0	
28 to 45 Degrees		1	48	48	48	36	36	36	32	24	24	16		
		2	48	36	36	36	36	24	24	24	16	16		
		3	48	36	36	36	36	24	24	24	16	16		
21-25 PSF	B	0 to 7 Degrees	1	48 /*64	48 /*64	48 /*64	48 /*64	48 /*64	48 /*64	48 /*64	48 /*60	48	36	36
			2	48 /*60	48	48	36	36	36	32	24	24	16	
			3	36	32	32	24	24	16	16	16	16	12	
		8 to 27 Degrees	1	48 /*60	48 /*60	48 /*60	48 /*60	48 /*60	48 /*60	48 /*60	48 /*60	48	48	36
			2	48 /*60	48	48	36	36	36	32	24	24	16	
			3	36	36	32	24	24	24	16	16	16	12	
		28 to 45 Degrees	1	48 /*60	48 /*60	48 /*60	48 /*60	48 /*60	48 /*60	48	48	36	36	36
			2	48 /*60	48 /*60	48 /*60	48 /*60	48	48	36	36	32	24	
			3	48 /*60	48 /*60	48 /*60	48 /*60	48	48	36	36	32	24	
	C	0 to 7 Degrees	1	48 /*64	48 /*64	48 /*64	48 /*60	48	48	36	36	32	24	
			2	36	36	36	32	24	24	16	16	16	12	
			3	24	24	16	16	16	16	12	12	0	0	
		8 to 27 Degrees	1	48 /*60	48 /*60	48 /*60	48 /*60	48	48	36	36	32	24	
			2	36	36	36	32**	24**	24	16	16	16	16	
			3	24	24	24	16	16	16	12	12	12	0	
		28 to 45 Degrees	1	48 /*60	48 /*60	48	48	48	36	36	32	24	24	
			2	48	48	48	36	36	36	32	24	24	16	
			3	48	48	48	36	36	36	32	24	24	16	
	D	0 to 7 Degrees	1	48 /*64	48 /*60	48	48	48	36	32	24	24	24	
			2	36	32	24	24	24	16	16	16	12	12	
			3	16	16	16	16	16	12	12	0	0	0	
		8 to 27 Degrees	1	48 /*60	48 /*60	48	48	48	36	36	32	24	24	
			2	36	32	24	24	24	16	16	16	12	12	
			3	24	16	16	16	16	12	12	0	0	0	
28 to 45 Degrees		1	48	48	48	36	36	36	32	24	24	16		
		2	48	36	36	36	36	24	24	24	16	16		
		3	48	36	36	36	36	24	24	24	16	16		

Appendix Span Tables

D

Portrait Orientation - ASCE 7-10 - Interior Mounts (5.5 ft Tributary Width)

Snow Load	Exposure Category	Roof Angle	Roof Zone	Basic Wind Speed, V (mph)										
				110	115	120	125	130	140	150	160	170	180	
26-30 PSF	B	0 to 7 Degrees	1	48 /*64	48 /*64	48 /*64	48 /*64	48 /*64	48 /*64	48 /*64	48 /*60	48	36	36
			2	48 /*60	48	48	36	36	36	32	24	24	16	
			3	36	32	32	24	24	16	16	16	16	12	
		8 to 27 Degrees	1	48	48	48	48	48	48	48	48	48	36	36
			2	48	48	48	36	36	36	32	24	24	16	
			3	36	36	32	24	24	24	16	16	16	12	
		28 to 45 Degrees	1	48	48	48	48	48	48	48	48	36	36	36
			2	48	48	48	48	48	48	36	36	32	24	
			3	48	48	48	48	48	48	36	36	32	24	
	C	0 to 7 Degrees	1	48 /*64	48 /*64	48 /*64	48 /*60	48	48	36	36	32	24	
			2	36	36	36	32	24	24	16	16	16	12	
			3	24	24	16	16	16	16	12	12	0	0	
		8 to 27 Degrees	1	48	48	48	48	48	48	36	36	32	24	
			2	36	36	36	32**	24**	24	16	16	16	16	
			3	24	24	24	16	16	16	12	12	12	0	
		28 to 45 Degrees	1	48	48	48	48	48	36	36	32	24	24	
			2	48	48	48	36	36	36	32	24	24	16	
			3	48	48	48	36	36	36	32	24	24	16	
	D	0 to 7 Degrees	1	48 /*64	48 /*60	48	48	48	36	32	24	24	24	
			2	36	32	24	24	24	16	16	16	12	12	
			3	16	16	16	16	16	12	12	0	0	0	
		8 to 27 Degrees	1	48	48	48	48	48	36	36	32	24	24	
			2	36	32	24	24	24	16	16	16	12	12	
			3	24	16	16	16	16	12	12	0	0	0	
		28 to 45 Degrees	1	48	48	48	36	36	36	32	24	24	16	
			2	48	36	36	36	36	24	24	24	16	16	
			3	48	36	36	36	36	24	24	24	16	16	
31-35 PSF	B	0 to 7 Degrees	1	36 /*60	36 /*60	36 /*60	36 /*60	36 /*60	36 /*60	36 /*60	36 /*60	36 /*48	36	36
			2	36 /*60	36 /*48	36 /*48	36	36	36	32	24	24	16	
			3	36	32	32	24	24	16	16	16	16	12	
		8 to 27 Degrees	1	36	36	36	36	36	36	36	36	36	36	36
			2	36	36	36	36	36	36	32	24	24	16	
			3	36	36	32	24	24	24	16	16	16	12	
		28 to 45 Degrees	1	36	36	36	36	36	36	36	36	36	36	36
			2	36	36	36	36	36	36	36	36	32	24	
			3	36	36	36	36	36	36	36	36	32	24	
	C	0 to 7 Degrees	1	36 /*60	36 /*60	36 /*60	36 /*60	36 /*48	36 /*48	36	36	32	24	
			2	36	36	36	32	24	24	16	16	16	12	
			3	24	24	16	16	16	16	12	12	0	0	
		8 to 27 Degrees	1	36	36	36	36	36	36	36	36	36	32	24
			2	36	36	36	32	24	24	16	16	16	16	
			3	24	24	24	16	16	16	12	12	12	0	
		28 to 45 Degrees	1	36	36	36	36	36	36	36	36	32	24	24
			2	36	36	36	36	36	36	32	24	24	16	
			3	36	36	36	36	36	36	32	24	24	16	
D	0 to 7 Degrees	1	36 /*60	36 /*60	36 /*48	36 /*48	36 /*48	36	32	24	24	24		
		2	36	32	24	24	24	16	16	16	12	12		
		3	16	16	16	16	16	12	12	0	0	0		
	8 to 27 Degrees	1	36	36	36	36	36	36	36	32	24	24		
		2	36	32	24	24	24	16	16	16	12	12		
		3	24	16	16	16	16	12	12	0	0	0		
	28 to 45 Degrees	1	36	36	36	36	36	36	32	24	24	16		
		2	36	36	36	36	36	24	24	24	16	16		
		3	36	36	36	36	36	24	24	24	16	16		

Appendix Span Tables

D

Portrait Orientation - ASCE 7-10 - Interior Mounts (5.5 ft Tributary Width)

Snow Load	Exposure Category	Roof Angle	Roof Zone	Basic Wind Speed, V (mph)											
				110	115	120	125	130	140	150	160	170	180		
36-40 PSF	B	0 to 7 Degrees	1	36 / *48	36 / *48	36 / *48	36 / *48	36 / *48	36 / *48	36 / *48	36 / *48	36 / *48	36	36	
			2	36 / *48	36 / *48	36 / *48	36	36	36	36	32	24	24	16	
			3	36	32	32	24	24	16	16	16	16	16	12	
		8 to 27 Degrees	1	36	36	36	36	36	36	36	36	36	36	36	36
			2	36	36	36	36	36	36	36	32	24	24	16	
			3	36	36	32	24	24	24	16	16	16	16	12	
		28 to 45 Degrees	1	36	36	36	36	36	36	36	36	36	36	36	36
			2	36	36	36	36	36	36	36	36	36	32	24	
			3	36	36	36	36	36	36	36	36	36	32	24	
	C	0 to 7 Degrees	1	36 / *48	36 / *48	36 / *48	36 / *48	36 / *48	36 / *48	36 / *48	36	36	32	24	
			2	36	36	36	32	24	24	16	16	16	16	12	
			3	24	24	16	16	16	16	12	12	0	0	0	
		8 to 27 Degrees	1	36	36	36	36	36	36	36	36	36	36	32	24
			2	36	36	36	32	24	24	16	16	16	16	16	
			3	24	24	24	16	16	16	12	12	12	12	0	
		28 to 45 Degrees	1	36	36	36	36	36	36	36	36	32	24	24	
			2	36	36	36	36	36	36	36	32	24	24	16	
			3	36	36	36	36	36	36	36	32	24	24	16	
	D	0 to 7 Degrees	1	36 / *48	36 / *48	36 / *48	36 / *48	36 / *48	36 / *48	36	32	24	24	24	
			2	36	32	24	24	24	16	16	16	12	12		
			3	16	16	16	16	16	12	12	0	0	0		
		8 to 27 Degrees	1	36	36	36	36	36	36	36	36	32	24	24	
			2	36	32	24	24	24	16	16	16	12	12		
			3	24	16	16	16	16	12	12	0	0	0		
28 to 45 Degrees		1	36	36	36	36	36	36	36	32	24	24	16		
		2	36	36	36	36	36	24	24	24	16	16			
		3	36	36	36	36	36	24	24	24	16	16			
41-45 PSF	B	0 to 7 Degrees	1	36 / *48	36 / *48	36 / *48	36 / *48	36 / *48	36 / *48	36 / *48	36 / *48	36 / *48	36	36	
			2	36 / *48	36 / *48	36 / *48	36	36	36	32	24	24	16		
			3	36	32	32	24	24	16	16	16	16	12		
		8 to 27 Degrees	1	36	36	36	36	36	36	36	36	36	36	36	
			2	36	36	36	36	36	36	36	32	24	24	16	
			3	36	36	32	24	24	24	16	16	16	12		
		28 to 45 Degrees	1	36	36	36	36	36	36	36	36	36	36	36	
			2	36	36	36	36	36	36	36	36	36	32	24	
			3	36	36	36	36	36	36	36	36	36	32	24	
	C	0 to 7 Degrees	1	36 / *48	36 / *48	36 / *48	36 / *48	36 / *48	36 / *48	36 / *48	36	36	32	24	
			2	36	36	36	32	24	24	16	16	16	12		
			3	24	24	16	16	16	16	12	12	0	0		
		8 to 27 Degrees	1	36	36	36	36	36	36	36	36	36	32	24	
			2	36	36	36	32	24	24	16	16	16	16		
			3	24	24	24	16	16	16	12	12	12	0		
		28 to 45 Degrees	1	36	36	36	36	36	36	36	36	32	24	24	
			2	36	36	36	36	36	36	36	32	24	24	16	
			3	36	36	36	36	36	36	36	32	24	24	16	
	D	0 to 7 Degrees	1	36 / *48	36 / *48	36 / *48	36 / *48	36 / *48	36 / *48	36	32	24	24	24	
			2	36	32	24	24	24	16	16	16	12	12		
			3	16	16	16	16	16	12	12	0	0	0		
		8 to 27 Degrees	1	36	36	36	36	36	36	36	36	32	24	24	
			2	36	32	24	24	24	16	16	16	12	12		
			3	24	16	16	16	16	12	12	0	0	0		
28 to 45 Degrees		1	36	36	36	36	36	36	36	32	24	24	16		
		2	36	36	36	36	36	24	24	24	16	16			
		3	36	36	36	36	36	24	24	24	16	16			

Appendix Span Tables

D

Portrait Orientation - ASCE 7-10 - Interior Mounts (5.5 ft Tributary Width)

Snow Load	Exposure Category	Roof Angle	Roof Zone	Basic Wind Speed, V (mph)											
				110	115	120	125	130	140	150	160	170	180		
46-50 PSF	B	0 to 7 Degrees	1	36 / *48	36 / *48	36 / *48	36 / *48	36 / *48	36 / *48	36 / *48	36 / *48	36 / *48	36	36	
			2	36 / *48	36 / *48	36 / *48	36	36	36	36	32	24	24	16	
			3	36	32	32	24	24	16	16	16	16	16	12	
		8 to 27 Degrees	1	32	32	32	32	32	32	32	32	32	32	32	32
			2	32	32	32	32	32	32	32	32	24	24	16	
			3	32	32	32	24	24	24	16	16	16	16	12	
		28 to 45 Degrees	1	32	32	32	32	32	32	32	32	32	32	32	32
			2	32	32	32	32	32	32	32	32	32	32	24	24
			3	32	32	32	32	32	32	32	32	32	32	24	24
	C	0 to 7 Degrees	1	36 / *48	36 / *48	36 / *48	36 / *48	36 / *48	36 / *48	36 / *48	36	36	32	24	
			2	36	36	36	32	24	24	16	16	16	16	12	
			3	24	24	16	16	16	16	16	12	12	0	0	
		8 to 27 Degrees	1	32	32	32	32	32	32	32	32	32	32	32	24
			2	32	32	32	32	24	24	16	16	16	16	16	
			3	24	24	24	16	16	16	12	12	12	12	0	
		28 to 45 Degrees	1	32	32	32	32	32	32	32	32	32	32	24	24
			2	32	32	32	32	32	32	32	32	24	24	16	
			3	32	32	32	32	32	32	32	32	24	24	16	
	D	0 to 7 Degrees	1	36 / *48	36 / *48	36 / *48	36 / *48	36 / *48	36	32	24	24	24	24	
			2	36	32	24	24	24	16	16	16	12	12	12	
			3	16	16	16	16	16	12	12	0	0	0		
		8 to 27 Degrees	1	32	32	32	32	32	32	32	32	32	24	0	
			2	32	32	24	24	24	16	16	16	12	0		
			3	24	16	16	16	16	12	12	0	0	0		
		28 to 45 Degrees	1	32	32	32	32	32	32	32	32	24	24	16	
			2	32	32	32	32	32	24	24	24	16	16		
			3	32	32	32	32	32	24	24	24	16	16		

Appendix Span Tables

D

Landscape Orientation - ASCE 7-10 - Edge Mounts (1.65 ft Tributary Width)

Snow Load	Exposure Category	Roof Angle	Roof Zone	Basic Wind Speed, V (mph)											
				110	115	120	125	130	140	150	160	170	180		
0 PSF	B	0 to 7 Degrees	1	72	72	72	72	72	72	72	72	72	72	72	72
			2	72	72	72	72	72	72	72	72	72	72	72	0
			3	72	72	72	72	72	72	64	0	0	0	0	0
		8 to 27 Degrees	1	72	72	72	72	72	72	72	72	72	72	72	72
			2	72	72	72	72	72	72	72	72	72	72	72	64
			3	72	72	72	72	72	72	72	0	0	0	0	0
		28 to 45 Degrees	1	72	72	72	72	72	72	72	72	72	72	72	72
			2	72	72	72	72	72	72	72	72	72	72	72	72
			3	72	72	72	72	72	72	72	72	72	72	72	72
	C	0 to 7 Degrees	1	72	72	72	72	72	72	72	72	72	72	72	
			2	72	72	72	72	72	72	0	0	0	0	0	
			3	72	72	64	0	0	0	0	0	0	0	0	
		8 to 27 Degrees	1	72	72	72	72	72	72	72	72	72	72	72	72
			2	72	72	72	72	72	72	72	64	0	0	0	0
			3	72	72	64	0	0	0	0	0	0	0	0	0
		28 to 45 Degrees	1	72	72	72	72	72	72	72	72	72	72	72	72
			2	72	72	72	72	72	72	72	72	72	72	72	64
			3	72	72	72	72	72	72	72	72	72	72	72	64
	D	0 to 7 Degrees	1	72	72	72	72	72	72	72	72	72	72	64	
			2	72	72	72	72	72	72	0	0	0	0	0	
			3	64	0	0	0	0	0	0	0	0	0	0	
		8 to 27 Degrees	1	72	72	72	72	72	72	72	72	72	72	72	72
			2	72	72	72	72	72	72	64	0	0	0	0	0
			3	64	0	0	0	0	0	0	0	0	0	0	0
28 to 45 Degrees		1	72	72	72	72	72	72	72	72	72	72	72	64	
		2	72	72	72	72	72	72	72	72	72	72	0	0	
		3	72	72	72	72	72	72	72	72	72	72	0	0	
1-15 PSF	B	0 to 7 Degrees	1	72	72	72	72	72	72	72	72	72	72	72	
			2	72	72	72	72	72	72	72	72	72	72	0	
			3	72	72	72	72	72	72	64	0	0	0	0	
		8 to 27 Degrees	1	72	72	72	72	72	72	72	72	72	72	72	72
			2	72	72	72	72	72	72	72	72	72	72	72	64
			3	72	72	72	72	72	72	72	0	0	0	0	0
		28 to 45 Degrees	1	72	72	72	72	72	72	72	72	72	72	72	72
			2	72	72	72	72	72	72	72	72	72	72	72	72
			3	72	72	72	72	72	72	72	72	72	72	72	72
	C	0 to 7 Degrees	1	72	72	72	72	72	72	72	72	72	72	72	
			2	72	72	72	72	72	72	72	0	0	0	0	
			3	72	72	64	0	0	0	0	0	0	0	0	
		8 to 27 Degrees	1	72	72	72	72	72	72	72	72	72	72	72	72
			2	72	72	72	72	72	72	72	64	0	0	0	0
			3	72	72	64	0	0	0	0	0	0	0	0	0
		28 to 45 Degrees	1	72	72	72	72	72	72	72	72	72	72	72	72
			2	72	72	72	72	72	72	72	72	72	72	72	64
			3	72	72	72	72	72	72	72	72	72	72	72	64
	D	0 to 7 Degrees	1	72	72	72	72	72	72	72	72	72	72	72	64
			2	72	72	72	72	72	72	0	0	0	0	0	0
			3	64	0	0	0	0	0	0	0	0	0	0	0
		8 to 27 Degrees	1	72	72	72	72	72	72	72	72	72	72	72	72
			2	72	72	72	72	72	72	64	0	0	0	0	0
			3	64	0	0	0	0	0	0	0	0	0	0	0
28 to 45 Degrees		1	72	72	72	72	72	72	72	72	72	72	72	64	
		2	72	72	72	72	72	72	72	72	72	72	0	0	
		3	72	72	72	72	72	72	72	72	72	72	0	0	

Appendix Span Tables

D

Landscape Orientation - ASCE 7-10 - Edge Mounts (1.65 ft Tributary Width)

Snow Load	Exposure Category	Roof Angle	Roof Zone	Basic Wind Speed, V (mph)											
				110	115	120	125	130	140	150	160	170	180		
16-20 PSF	B	0 to 7 Degrees	1	72	72	72	72	72	72	72	72	72	72	72	
			2	72	72	72	72	72	72	72	72	72	72	0	
			3	72	72	72	72	72	72	64	0	0	0	0	
		8 to 27 Degrees	1	72	72	72	72	72	72	72	72	72	72	72	72
			2	72	72	72	72	72	72	72	72	72	72	72	64
			3	72	72	72	72	72	72	72	0	0	0	0	
		28 to 45 Degrees	1	72	72	72	72	72	72	72	72	72	72	72	72
			2	72	72	72	72	72	72	72	72	72	72	72	72
			3	72	72	72	72	72	72	72	72	72	72	72	72
	C	0 to 7 Degrees	1	72	72	72	72	72	72	72	72	72	72	72	
			2	72	72	72	72	72	72	0	0	0	0	0	
			3	72	72	64	0	0	0	0	0	0	0	0	
		8 to 27 Degrees	1	72	72	72	72	72	72	72	72	72	72	72	72
			2	72	72	72	72	72	72	72	64	0	0	0	0
			3	72	72	64	0	0	0	0	0	0	0	0	
		28 to 45 Degrees	1	72	72	72	72	72	72	72	72	72	72	72	72
			2	72	72	72	72	72	72	72	72	72	72	72	64
			3	72	72	72	72	72	72	72	72	72	72	72	64
	D	0 to 7 Degrees	1	72	72	72	72	72	72	72	72	72	72	64	
			2	72	72	72	72	72	72	0	0	0	0	0	
			3	64	0	0	0	0	0	0	0	0	0	0	
		8 to 27 Degrees	1	72	72	72	72	72	72	72	72	72	72	72	72
			2	72	72	72	72	72	72	64	0	0	0	0	0
			3	64	0	0	0	0	0	0	0	0	0	0	
28 to 45 Degrees		1	72	72	72	72	72	72	72	72	72	72	72	64	
		2	72	72	72	72	72	72	72	72	72	72	0	0	
		3	72	72	72	72	72	72	72	72	72	72	0	0	
21-25 PSF	B	0 to 7 Degrees	1	72	72	72	72	72	72	72	72	72	72	72	
			2	72	72	72	72	72	72	72	72	72	72	0	
			3	72	72	72	72	72	72	64	0	0	0	0	
		8 to 27 Degrees	1	72	72	72	72	72	72	72	72	72	72	72	72
			2	72	72	72	72	72	72	72	72	72	72	72	64
			3	72	72	72	72	72	72	72	0	0	0	0	
		28 to 45 Degrees	1	72	72	72	72	72	72	72	72	72	72	72	72
			2	72	72	72	72	72	72	72	72	72	72	72	72
			3	72	72	72	72	72	72	72	72	72	72	72	72
	C	0 to 7 Degrees	1	72	72	72	72	72	72	72	72	72	72	72	
			2	72	72	72	72	72	72	0	0	0	0	0	
			3	72	72	64	0	0	0	0	0	0	0	0	
8 to 27 Degrees	1	72	72	72	72	72	72	72	72	72	72	72	72		
	2	72	72	72	72	72	72	72	64	0	0	0	0		
	3	72	72	64	0	0	0	0	0	0	0	0			
28 to 45 Degrees	1	72	72	72	72	72	72	72	72	72	72	72	72		
	2	72	72	72	72	72	72	72	72	72	72	72	64		
	3	72	72	72	72	72	72	72	72	72	72	72	64		
D	0 to 7 Degrees	1	72	72	72	72	72	72	72	72	72	72	72	64	
		2	72	72	72	72	72	72	0	0	0	0	0	0	
		3	64	0	0	0	0	0	0	0	0	0	0		
	8 to 27 Degrees	1	72	72	72	72	72	72	72	72	72	72	72	72	
		2	72	72	72	72	72	72	64	0	0	0	0	0	
		3	64	0	0	0	0	0	0	0	0	0	0		
	28 to 45 Degrees	1	72	72	72	72	72	72	72	72	72	72	72	64	
		2	72	72	72	72	72	72	72	72	72	72	0	0	
		3	72	72	72	72	72	72	72	72	72	72	0	0	

Appendix Span Tables

D

Landscape Orientation - ASCE 7-10 - Edge Mounts (1.65 ft Tributary Width)

Snow Load	Exposure Category	Roof Angle	Roof Zone	Basic Wind Speed, V (mph)											
				110	115	120	125	130	140	150	160	170	180		
26-30 PSF	B	0 to 7 Degrees	1	72	72	72	72	72	72	72	72	72	72	72	72
			2	72	72	72	72	72	72	72	72	72	72	72	0
			3	72	72	72	72	72	72	64	0	0	0	0	0
		8 to 27 Degrees	1	72	72	72	72	72	72	72	72	72	72	72	72
			2	72	72	72	72	72	72	72	72	72	72	72	64
			3	72	72	72	72	72	72	72	0	0	0	0	0
		28 to 45 Degrees	1	72	72	72	72	72	72	72	72	72	72	72	72
			2	72	72	72	72	72	72	72	72	72	72	72	72
			3	72	72	72	72	72	72	72	72	72	72	72	72
	C	0 to 7 Degrees	1	72	72	72	72	72	72	72	72	72	72	72	
			2	72	72	72	72	72	72	0	0	0	0	0	
			3	72	72	64	0	0	0	0	0	0	0	0	
		8 to 27 Degrees	1	72	72	72	72	72	72	72	72	72	72	72	72
			2	72	72	72	72	72	72	72	64	0	0	0	0
			3	72	72	64	0	0	0	0	0	0	0	0	0
		28 to 45 Degrees	1	72	72	72	72	72	72	72	72	72	72	72	72
			2	72	72	72	72	72	72	72	72	72	72	72	64
			3	72	72	72	72	72	72	72	72	72	72	72	64
	D	0 to 7 Degrees	1	72	72	72	72	72	72	72	72	72	72	64	
			2	72	72	72	72	72	72	0	0	0	0	0	
			3	64	0	0	0	0	0	0	0	0	0	0	
		8 to 27 Degrees	1	72	72	72	72	72	72	72	72	72	72	72	72
			2	72	72	72	72	72	72	64	0	0	0	0	0
			3	64	0	0	0	0	0	0	0	0	0	0	0
28 to 45 Degrees		1	72	72	72	72	72	72	72	72	72	72	72	64	
		2	72	72	72	72	72	72	72	72	72	72	0	0	
		3	72	72	72	72	72	72	72	72	72	72	0	0	
31-35 PSF	B	0 to 7 Degrees	1	72	72	72	72	72	72	72	72	72	72	72	
			2	72	72	72	72	72	72	72	72	72	72	0	
			3	72	72	72	72	72	72	64	0	0	0	0	
		8 to 27 Degrees	1	72	72	72	72	72	72	72	72	72	72	72	72
			2	72	72	72	72	72	72	72	72	72	72	72	64
			3	72	72	72	72	72	72	72	0	0	0	0	0
		28 to 45 Degrees	1	72	72	72	72	72	72	72	72	72	72	72	72
			2	72	72	72	72	72	72	72	72	72	72	72	72
			3	72	72	72	72	72	72	72	72	72	72	72	72
	C	0 to 7 Degrees	1	72	72	72	72	72	72	72	72	72	72	72	
			2	72	72	72	72	72	72	72	0	0	0	0	
			3	72	72	64	0	0	0	0	0	0	0	0	
		8 to 27 Degrees	1	72	72	72	72	72	72	72	72	72	72	72	72
			2	72	72	72	72	72	72	72	64	0	0	0	0
			3	72	72	64	0	0	0	0	0	0	0	0	0
		28 to 45 Degrees	1	72	72	72	72	72	72	72	72	72	72	72	72
			2	72	72	72	72	72	72	72	72	72	72	72	64
			3	72	72	72	72	72	72	72	72	72	72	72	64
	D	0 to 7 Degrees	1	72	72	72	72	72	72	72	72	72	72	72	64
			2	72	72	72	72	72	72	0	0	0	0	0	0
			3	64	0	0	0	0	0	0	0	0	0	0	0
		8 to 27 Degrees	1	72	72	72	72	72	72	72	72	72	72	72	72
			2	72	72	72	72	72	72	64	0	0	0	0	0
			3	64	0	0	0	0	0	0	0	0	0	0	0
28 to 45 Degrees		1	72	72	72	72	72	72	72	72	72	72	72	64	
		2	72	72	72	72	72	72	72	72	72	72	0	0	
		3	72	72	72	72	72	72	72	72	72	72	0	0	

Appendix Span Tables

D

Landscape Orientation - ASCE 7-10 - Edge Mounts (1.65 ft Tributary Width)

Snow Load	Exposure Category	Roof Angle	Roof Zone	Basic Wind Speed, V (mph)										
				110	115	120	125	130	140	150	160	170	180	
36-40 PSF	B	0 to 7 Degrees	1	72	72	72	72	72	72	72	72	72	72	72
			2	72	72	72	72	72	72	72	72	72	72	0
			3	72	72	72	72	72	72	64	0	0	0	0
		8 to 27 Degrees	1	72	72	72	72	72	72	72	72	72	72	72
			2	72	72	72	72	72	72	72	72	72	72	64
			3	72	72	72	72	72	72	72	0	0	0	0
		28 to 45 Degrees	1	72	72	72	72	72	72	72	72	72	72	72
			2	72	72	72	72	72	72	72	72	72	72	72
			3	72	72	72	72	72	72	72	72	72	72	72
	C	0 to 7 Degrees	1	72	72	72	72	72	72	72	72	72	72	
			2	72	72	72	72	72	72	0	0	0	0	
			3	72	72	64	0	0	0	0	0	0	0	
		8 to 27 Degrees	1	72	72	72	72	72	72	72	72	72	72	72
			2	72	72	72	72	72	72	72	64	0	0	0
			3	72	72	64	0	0	0	0	0	0	0	
		28 to 45 Degrees	1	72	72	72	72	72	72	72	72	72	72	72
			2	72	72	72	72	72	72	72	72	72	72	64
			3	72	72	72	72	72	72	72	72	72	72	64
	D	0 to 7 Degrees	1	72	72	72	72	72	72	72	72	72	72	
			2	72	72	72	72	72	72	0	0	0	0	
			3	64	0	0	0	0	0	0	0	0	0	
		8 to 27 Degrees	1	72	72	72	72	72	72	72	72	72	72	72
			2	72	72	72	72	72	72	64	0	0	0	0
			3	64	0	0	0	0	0	0	0	0	0	
28 to 45 Degrees		1	72	72	72	72	72	72	72	72	72	72	64	
		2	72	72	72	72	72	72	72	72	72	0	0	
		3	72	72	72	72	72	72	72	72	72	0	0	
40-50 PSF	B	0 to 7 Degrees	1	72	72	72	72	72	72	72	72	72	72	
			2	72	72	72	72	72	72	72	72	72	0	
			3	72	72	72	72	72	72	64	0	0	0	
		8 to 27 Degrees	1	72	72	72	72	72	72	72	72	72	72	72
			2	72	72	72	72	72	72	72	72	72	72	64
			3	72	72	72	72	72	72	72	0	0	0	0
		28 to 45 Degrees	1	72	72	72	72	72	72	72	72	72	72	72
			2	72	72	72	72	72	72	72	72	72	72	72
			3	72	72	72	72	72	72	72	72	72	72	72
	C	0 to 7 Degrees	1	72	72	72	72	72	72	72	72	72	72	
			2	72	72	72	72	72	72	72	0	0	0	0
			3	72	72	64	0	0	0	0	0	0	0	0
		8 to 27 Degrees	1	72	72	72	72	72	72	72	72	72	64	64
			2	72	72	72	72	72	72	72	64	0	0	0
			3	72	72	64	0	0	0	0	0	0	0	0
		28 to 45 Degrees	1	72	72	72	72	72	72	72	72	72	72	72
			2	72	72	72	72	72	72	72	72	72	72	64
			3	72	72	72	72	72	72	72	72	72	72	64
	D	0 to 7 Degrees	1	72	72	72	72	72	72	72	72	72	72	
			2	72	72	72	72	72	72	0	0	0	0	
			3	64	0	0	0	0	0	0	0	0	0	
		8 to 27 Degrees	1	72	72	72	72	72	72	72	64	64	64	48
			2	72	72	72	72	72	72	64	0	0	0	0
			3	64	0	0	0	0	0	0	0	0	0	0
28 to 45 Degrees		1	72	72	72	72	72	72	72	72	72	64	64	
		2	72	72	72	72	72	72	72	72	72	0	0	
		3	72	72	72	72	72	72	72	72	72	0	0	



Appendix Span Tables

D

Landscape Orientation - ASCE 7-10 - Edge Mounts (1.65 ft Tributary Width)

Snow Load	Exposure Category	Roof Angle	Roof Zone	Basic Wind Speed, V (mph)											
				110	115	120	125	130	140	150	160	170	180		
51-70 PSF	B	0 to 7 Degrees	1	48	48	48	48	48	48	48	48	48	48	48	
			2	48	48	48	48	48	48	48	48	48	48	0	
			3	48	48	48	48	48	48	48	0	0	0	0	
		8 to 27 Degrees	1	48	48	48	48	48	48	48	48	48	48	48	48
			2	48	48	48	48	48	48	48	48	48	48	48	48
			3	48	48	48	48	48	48	48	0	0	0	0	
		28 to 45 Degrees	1	72	72	72	72	72	72	72	72	72	72	72	72
			2	72	72	72	72	72	72	72	72	72	72	72	72
			3	72	72	72	72	72	72	72	72	72	72	72	72
	C	0 to 7 Degrees	1	48	48	48	48	48	48	48	48	48	48	48	
			2	48	48	48	48	48	48	48	0	0	0	0	
			3	48	48	48	48	0	0	0	0	0	0	0	
		8 to 27 Degrees	1	48	48	48	48	48	48	48	48	48	48	48	48
			2	48	48	48	48	48	48	48	48	0	0	0	0
			3	48	48	48	48	0	0	0	0	0	0	0	0
		28 to 45 Degrees	1	72	72	72	72	72	72	72	72	72	72	64	48
			2	72	72	72	72	72	72	72	72	72	72	64	48
			3	72	72	72	72	72	72	72	72	72	72	64	48
	D	0 to 7 Degrees	1	48	48	48	48	48	48	48	48	48	48	48	
			2	48	48	48	48	48	48	0	0	0	0	0	
			3	48	0	0	0	0	0	0	0	0	0	0	
		8 to 27 Degrees	1	48	48	48	48	48	48	48	48	48	48	48	48
			2	48	48	48	48	48	48	48	48	0	0	0	0
			3	48	0	0	0	0	0	0	0	0	0	0	0
28 to 45 Degrees		1	72	72	72	72	72	72	72	72	72	64	48	48	
		2	72	72	72	72	72	72	72	72	72	64	0	0	
		3	72	72	72	72	72	72	72	72	72	64	0	0	
71-90 PSF	B	0 to 7 Degrees	1	48	48	48	48	48	48	48	48	48	48	48	
			2	48	48	48	48	48	48	48	48	48	48	0	
			3	48	48	48	48	48	48	48	0	0	0	0	
		8 to 27 Degrees	1	48	48	48	48	48	48	48	48	48	48	48	48
			2	48	48	48	48	48	48	48	48	48	48	48	48
			3	48	48	48	48	48	48	48	48	0	0	0	0
		28 to 45 Degrees	1	64	64	64	64	64	64	64	64	64	64	64	64
			2	64	64	64	64	64	64	64	64	64	64	64	64
			3	64	64	64	64	64	64	64	64	64	64	64	64
	C	0 to 7 Degrees	1	48	48	48	48	48	48	48	48	48	48	48	
			2	48	48	48	48	48	48	48	0	0	0	0	
			3	48	48	48	48	0	0	0	0	0	0	0	
		8 to 27 Degrees	1	48	48	48	48	48	48	48	48	48	48	48	48
			2	48	48	48	48	48	48	48	48	0	0	0	0
			3	48	48	48	48	0	0	0	0	0	0	0	0
		28 to 45 Degrees	1	64	64	64	64	64	64	64	64	64	48	48	48
			2	64	64	64	64	64	64	64	64	64	48	48	48
			3	64	64	64	64	64	64	64	64	64	48	48	48
	D	0 to 7 Degrees	1	48	48	48	48	48	48	48	48	48	48	48	
			2	48	48	48	48	48	48	0	0	0	0	0	
			3	48	0	0	0	0	0	0	0	0	0	0	
		8 to 27 Degrees	1	48	48	48	48	48	48	48	48	48	48	48	48
			2	48	48	48	48	48	48	48	48	0	0	0	0
			3	48	0	0	0	0	0	0	0	0	0	0	0
28 to 45 Degrees		1	64	64	64	64	64	64	64	64	48	48	48	48	
		2	64	64	64	64	64	64	64	64	48	48	0	0	
		3	64	64	64	64	64	64	64	64	48	48	0	0	

Appendix Span Tables

D

Portrait Orientation - ASCE 7-10 - Edge Mounts (2.75 ft Tributary Width)

Snow Load	Exposure Category	Roof Angle	Roof Zone	Basic Wind Speed, V (mph)											
				110	115	120	125	130	140	150	160	170	180		
0 PSF	B	0 to 7 Degrees	1	48 / *72	48 / *72	48 / *72	48 / *72	48 / *72	48 / *72	48 / *72	48 / *72	48 / *72	48 / *72	48 / *72	
			2	48 / *72	48 / *72	48 / *72	48 / *72	48 / *72	48 / *72	48 / *64	48	48	36		
			3	48 / *72	48 / *64	48 / *64	48 / *60	48	36	36	36	32	24		
		8 to 27 Degrees	1	48 / *72	48 / *72	48 / *72	48 / *72	48 / *72	48 / *72	48 / *72	48 / *72	48 / *72	48 / *72	48 / *72	48 / *72
			2	48 / *72	48 / *72	48 / *72	48 / *72	48 / *72	48 / *72	48 / *64	48	48	36		
			3	48 / *72	48 / *72	48 / *64	48 / *60	48	48	36	36	32	24		
		28 to 45 Degrees	1	48 / *72	48 / *72	48 / *72	48 / *72	48 / *72	48 / *72	48 / *72	48 / *72	48 / *72	48 / *72	48 / *72	48 / *72
			2	48 / *72	48 / *72	48 / *72	48 / *72	48 / *72	48 / *72	48 / *72	48 / *72	48 / *72	48 / *64	48 / *60	
			3	48 / *72	48 / *72	48 / *72	48 / *72	48 / *72	48 / *72	48 / *72	48 / *72	48 / *72	48 / *64	48 / *60	
	C	0 to 7 Degrees	1	48 / *72	48 / *72	48 / *72	48 / *72	48 / *72	48 / *72	48 / *72	48 / *72	48 / *72	48 / *64	48	
			2	48 / *72	48 / *72	48 / *72	48 / *64	48 / *60	48	36	36	32	24		
			3	48	48	36	36	36	32	24	24	16	16		
		8 to 27 Degrees	1	48 / *72	48 / *72	48 / *72	48 / *72	48 / *72	48 / *72	48 / *72	48 / *72	48 / *72	48 / *64	48 / *60	
			2	48 / *72	48 / *72	48 / *72	48 / *64	48 / *60	48	36	36	36	32		
			3	48	48	48	36	36	32	24	24	24	16		
		28 to 45 Degrees	1	48 / *72	48 / *72	48 / *72	48 / *72	48 / *72	48 / *72	48 / *72	48 / *72	48 / *64	48 / *60	48	
			2	48 / *72	48 / *72	48 / *72	48 / *72	48 / *72	48 / *72	48 / *64	48	48	36		
			3	48 / *72	48 / *72	48 / *72	48 / *72	48 / *72	48 / *72	48 / *64	48	48	36		
	D	0 to 7 Degrees	1	48 / *72	48 / *72	48 / *72	48 / *72	48 / *72	48 / *72	48 / *72	48 / *64	48 / *60	48	48	
			2	48 / *72	48 / *64	48 / *60	48	48	36	36	32	24	24		
			3	36	36	36	32	32	24	24	16	16	16		
		8 to 27 Degrees	1	48 / *72	48 / *72	48 / *72	48 / *72	48 / *72	48 / *72	48 / *72	48 / *72	48 / *64	48	48	
			2	48 / *72	48 / *64	48 / *60	48	48	36	36	32	24	24		
			3	48	36	36	36	32	24	24	16	16	16		
28 to 45 Degrees		1	48 / *72	48 / *72	48 / *72	48 / *72	48 / *72	48 / *72	48 / *72	48 / *64	48	48	36		
		2	48 / *72	48 / *72	48 / *72	48 / *72	48 / *72	48 / *60	48	48	36	36			
		3	48 / *72	48 / *72	48 / *72	48 / *72	48 / *72	48 / *60	48	48	36	36			
1-15 PSF	B	0 to 7 Degrees	1	48 / *72	48 / *72	48 / *72	48 / *72	48 / *72	48 / *72	48 / *72	48 / *72	48 / *72	48 / *72	48 / *72	
			2	48 / *72	48 / *72	48 / *72	48 / *72	48 / *72	48 / *72	48 / *64	48	48	36		
			3	48 / *72	48 / *64	48 / *64	48 / *60	48	36	36	36	32	24		
		8 to 27 Degrees	1	48 / *72	48 / *72	48 / *72	48 / *72	48 / *72	48 / *72	48 / *72	48 / *72	48 / *72	48 / *72	48 / *72	
			2	48 / *72	48 / *72	48 / *72	48 / *72	48 / *72	48 / *72	48 / *64	48	48	36		
			3	48 / *72	48 / *72	48 / *64	48 / *60	48	48	36	36	32	24		
		28 to 45 Degrees	1	48 / *72	48 / *72	48 / *72	48 / *72	48 / *72	48 / *72	48 / *72	48 / *72	48 / *72	48 / *72	48 / *72	
			2	48 / *72	48 / *72	48 / *72	48 / *72	48 / *72	48 / *72	48 / *72	48 / *72	48 / *72	48 / *64	48 / *60	
			3	48 / *72	48 / *72	48 / *72	48 / *72	48 / *72	48 / *72	48 / *72	48 / *72	48 / *72	48 / *64	48 / *60	
	C	0 to 7 Degrees	1	48 / *72	48 / *72	48 / *72	48 / *72	48 / *72	48 / *72	48 / *72	48 / *72	48 / *72	48 / *64	48	
			2	48 / *72	48 / *72	48 / *72	48 / *64	48 / *60	48	36	36	32	24		
			3	48	48	36	36	36	32	24	24	16	16		
		8 to 27 Degrees	1	48 / *72	48 / *72	48 / *72	48 / *72	48 / *72	48 / *72	48 / *72	48 / *72	48 / *72	48 / *64	48 / *60	
			2	48 / *72	48 / *72	48 / *72	48 / *64	48 / *60	48	36	36	36	32		
			3	48	48	48	36	36	32	24	24	24	16		
		28 to 45 Degrees	1	48 / *72	48 / *72	48 / *72	48 / *72	48 / *72	48 / *72	48 / *72	48 / *72	48 / *64	48 / *60	48	
			2	48 / *72	48 / *72	48 / *72	48 / *72	48 / *72	48 / *72	48 / *64	48	48	36		
			3	48 / *72	48 / *72	48 / *72	48 / *72	48 / *72	48 / *72	48 / *64	48	48	36		
	D	0 to 7 Degrees	1	48 / *72	48 / *72	48 / *72	48 / *72	48 / *72	48 / *72	48 / *72	48 / *64	48 / *60	48	48	
			2	48 / *72	48 / *64	48 / *60	48	48	36	36	32	24	24		
			3	36	36	36	32	32	24	24	16	16	16		
		8 to 27 Degrees	1	48 / *72	48 / *72	48 / *72	48 / *72	48 / *72	48 / *72	48 / *72	48 / *72	48 / *64	48	48	
			2	48 / *72	48 / *64	48 / *60	48	48	36	36	32	24	24		
			3	48	36	36	36	32	24	24	16	16	16		
28 to 45 Degrees		1	48 / *72	48 / *72	48 / *72	48 / *72	48 / *72	48 / *72	48 / *72	48 / *64	48	48	36		
		2	48 / *72	48 / *72	48 / *72	48 / *72	48 / *72	48 / *60	48	48	36	36			
		3	48 / *72	48 / *72	48 / *72	48 / *72	48 / *72	48 / *60	48	48	36	36			

Appendix Span Tables

D

Portrait Orientation - ASCE 7-10 - Edge Mounts (2.75 ft Tributary Width)

Snow Load	Exposure Category	Roof Angle	Roof Zone	Basic Wind Speed, V (mph)											
				110	115	120	125	130	140	150	160	170	180		
16-20 PSF	B	0 to 7 Degrees	1	48 / *72	48 / *72	48 / *72	48 / *72	48 / *72	48 / *72	48 / *72	48 / *72	48 / *72	48 / *72	48 / *72	
			2	48 / *72	48 / *72	48 / *72	48 / *72	48 / *72	48 / *72	48 / *72	48 / *64	48	48	36	
			3	48 / *72	48 / *64	48 / *64	48 / *60	48	36	36	36	36	32	24	
		8 to 27 Degrees	1	48 / *72	48 / *72	48 / *72	48 / *72	48 / *72	48 / *72	48 / *72	48 / *72	48 / *72	48 / *72	48 / *72	48 / *72
			2	48 / *72	48 / *72	48 / *72	48 / *72	48 / *72	48 / *72	48 / *72	48 / *64	48	48	36	
			3	48 / *72	48 / *72	48 / *64	48 / *60	48	48	36	36	36	32	24	
		28 to 45 Degrees	1	48 / *72	48 / *72	48 / *72	48 / *72	48 / *72	48 / *72	48 / *72	48 / *72	48 / *72	48 / *72	48 / *72	48 / *72
			2	48 / *72	48 / *72	48 / *72	48 / *72	48 / *72	48 / *72	48 / *72	48 / *72	48 / *72	48 / *64	48 / *60	
			3	48 / *72	48 / *72	48 / *72	48 / *72	48 / *72	48 / *72	48 / *72	48 / *72	48 / *72	48 / *64	48 / *60	
	C	0 to 7 Degrees	1	48 / *72	48 / *72	48 / *72	48 / *72	48 / *72	48 / *72	48 / *72	48 / *72	48 / *72	48 / *64	48	
			2	48 / *72	48 / *72	48 / *72	48 / *64	48 / *60	48	36	36	32	24		
			3	48	48	36	36	36	32	24	24	16	16		
		8 to 27 Degrees	1	48 / *72	48 / *72	48 / *72	48 / *72	48 / *72	48 / *72	48 / *72	48 / *72	48 / *72	48 / *64	48 / *60	
			2	48 / *72	48 / *72	48 / *72	48 / *64	48 / *60	48	36	36	36	36	32	
			3	48	48	48	36	36	32	24	24	24	24	16	
		28 to 45 Degrees	1	48 / *72	48 / *72	48 / *72	48 / *72	48 / *72	48 / *72	48 / *72	48 / *72	48 / *64	48 / *60	48	
			2	48 / *72	48 / *72	48 / *72	48 / *72	48 / *72	48 / *72	48 / *64	48	48	36	36	
			3	48 / *72	48 / *72	48 / *72	48 / *72	48 / *72	48 / *72	48 / *64	48	48	36	36	
	D	0 to 7 Degrees	1	48 / *72	48 / *72	48 / *72	48 / *72	48 / *72	48 / *72	48 / *72	48 / *64	48 / *60	48	48	
			2	48 / *72	48 / *64	48 / *60	48	48	36	36	32	24	24		
			3	36	36	36	32	32	24	24	16	16	16		
		8 to 27 Degrees	1	48 / *72	48 / *72	48 / *72	48 / *72	48 / *72	48 / *72	48 / *72	48 / *72	48 / *64	48	48	
			2	48 / *72	48 / *64	48 / *60	48	48	36	36	32	24	24		
			3	48	36	36	36	32	24	24	16	16	16		
28 to 45 Degrees		1	48 / *72	48 / *72	48 / *72	48 / *72	48 / *72	48 / *72	48 / *72	48 / *64	48	48	36		
		2	48 / *72	48 / *72	48 / *72	48 / *72	48 / *72	48 / *60	48	48	36	36			
		3	48 / *72	48 / *72	48 / *72	48 / *72	48 / *72	48 / *60	48	48	36	36			
21-25 PSF	B	0 to 7 Degrees	1	48 / *72	48 / *72	48 / *72	48 / *72	48 / *72	48 / *72	48 / *72	48 / *72	48 / *72	48 / *72	48 / *72	
			2	48 / *72	48 / *72	48 / *72	48 / *72	48 / *72	48 / *72	48 / *64	48	48	36		
			3	48 / *72	48 / *64	48 / *64	48 / *60	48	36	36	36	32	24		
		8 to 27 Degrees	1	48 / *72	48 / *72	48 / *72	48 / *72	48 / *72	48 / *72	48 / *72	48 / *72	48 / *72	48 / *72	48 / *72	
			2	48 / *72	48 / *72	48 / *72	48 / *72	48 / *72	48 / *72	48 / *64	48	48	36		
			3	48 / *72	48 / *72	48 / *64	48 / *60	48	48	36	36	32	24		
		28 to 45 Degrees	1	48 / *72	48 / *72	48 / *72	48 / *72	48 / *72	48 / *72	48 / *72	48 / *72	48 / *72	48 / *72	48 / *72	
			2	48 / *72	48 / *72	48 / *72	48 / *72	48 / *72	48 / *72	48 / *72	48 / *72	48 / *64	48 / *60		
			3	48 / *72	48 / *72	48 / *72	48 / *72	48 / *72	48 / *72	48 / *72	48 / *72	48 / *64	48 / *60		
	C	0 to 7 Degrees	1	48 / *72	48 / *72	48 / *72	48 / *72	48 / *72	48 / *72	48 / *72	48 / *72	48 / *64	48		
			2	48 / *72	48 / *72	48 / *72	48 / *64	48 / *60	48	36	36	32	24		
			3	48	48	36	36	36	32	24	24	16	16		
8 to 27 Degrees	1	48 / *72	48 / *72	48 / *72	48 / *72	48 / *72	48 / *72	48 / *72	48 / *72	48 / *72	48 / *64	48 / *60			
	2	48 / *72	48 / *72	48 / *72	48 / *64	48 / *60	48	36	36	36	36	32			
	3	48	48	48	36	36	32	24	24	24	24	16			
28 to 45 Degrees	1	48 / *72	48 / *72	48 / *72	48 / *72	48 / *72	48 / *72	48 / *72	48 / *72	48 / *64	48 / *60	48			
	2	48 / *72	48 / *72	48 / *72	48 / *72	48 / *72	48 / *72	48 / *64	48	48	36	36			
	3	48 / *72	48 / *72	48 / *72	48 / *72	48 / *72	48 / *72	48 / *64	48	48	36	36			
D	0 to 7 Degrees	1	48 / *72	48 / *72	48 / *72	48 / *72	48 / *72	48 / *72	48 / *72	48 / *64	48 / *60	48	48		
		2	48 / *72	48 / *64	48 / *60	48	48	36	36	32	24	24			
		3	36	36	36	32	32	24	24	16	16	16			
	8 to 27 Degrees	1	48 / *72	48 / *72	48 / *72	48 / *72	48 / *72	48 / *72	48 / *72	48 / *72	48 / *64	48	48		
		2	48 / *72	48 / *64	48 / *60	48	48	36	36	32	24	24			
		3	48	36	36	36	32	24	24	16	16	16			
	28 to 45 Degrees	1	48 / *72	48 / *72	48 / *72	48 / *72	48 / *72	48 / *72	48 / *72	48 / *64	48	48	36		
		2	48 / *72	48 / *72	48 / *72	48 / *72	48 / *72	48 / *60	48	48	36	36			
		3	48 / *72	48 / *72	48 / *72	48 / *72	48 / *72	48 / *60	48	48	36	36			

Appendix Span Tables

D

Portrait Orientation - ASCE 7-10 - Edge Mounts (2.75 ft Tributary Width)

Snow Load	Exposure Category	Roof Angle	Roof Zone	Basic Wind Speed, V (mph)											
				110	115	120	125	130	140	150	160	170	180		
26-30 PSF	B	0 to 7 Degrees	1	48 /°72	48 /°72	48 /°72	48 /°72	48 /°72	48 /°72	48 /°72	48 /°72	48 /°72	48 /°72	48 /°72	
			2	48 /°72	48 /°72	48 /°72	48 /°72	48 /°72	48 /°72	48 /°64	48	48	36		
			3	48 /°72	48 /°64	48 /°64	48 /°60	48	36	36	36	32	24		
		8 to 27 Degrees	1	48 /°72	48 /°72	48 /°72	48 /°72	48 /°72	48 /°72	48 /°72	48 /°72	48 /°72	48 /°72	48 /°72	48 /°72
			2	48 /°72	48 /°72	48 /°72	48 /°72	48 /°72	48 /°72	48 /°64	48	48	36		
			3	48 /°72	48 /°72	48 /°64	48 /°60	48	48	36	36	32	24		
		28 to 45 Degrees	1	48 /°72	48 /°72	48 /°72	48 /°72	48 /°72	48 /°72	48 /°72	48 /°72	48 /°72	48 /°72	48 /°72	48 /°72
			2	48 /°72	48 /°72	48 /°72	48 /°72	48 /°72	48 /°72	48 /°72	48 /°72	48 /°72	48 /°64	48 /°60	
			3	48 /°72	48 /°72	48 /°72	48 /°72	48 /°72	48 /°72	48 /°72	48 /°72	48 /°72	48 /°64	48 /°60	
	C	0 to 7 Degrees	1	48 /°72	48 /°72	48 /°72	48 /°72	48 /°72	48 /°72	48 /°72	48 /°72	48 /°72	48 /°64	48	
			2	48 /°72	48 /°72	48 /°72	48 /°64	48 /°60	48	36	36	32	24		
			3	48	48	36	36	36	32	24	24	16	16		
		8 to 27 Degrees	1	48 /°72	48 /°72	48 /°72	48 /°72	48 /°72	48 /°72	48 /°72	48 /°72	48 /°72	48 /°64	48 /°60	
			2	48 /°72	48 /°72	48 /°72	48 /°64	48 /°60	48	36	36	36	32		
			3	48	48	48	36	36	32	24	24	24	16		
		28 to 45 Degrees	1	48 /°72	48 /°72	48 /°72	48 /°72	48 /°72	48 /°72	48 /°72	48 /°72	48 /°64	48 /°60	48	
			2	48 /°72	48 /°72	48 /°72	48 /°72	48 /°72	48 /°72	48 /°64	48	48	36		
			3	48 /°72	48 /°72	48 /°72	48 /°72	48 /°72	48 /°72	48 /°64	48	48	36		
	D	0 to 7 Degrees	1	48 /°72	48 /°72	48 /°72	48 /°72	48 /°72	48 /°72	48 /°72	48 /°64	48 /°60	48	48	
			2	48 /°72	48 /°64	48 /°60	48	48	36	36	32	24	24		
			3	36	36	36	32	32	24	24	16	16	16		
		8 to 27 Degrees	1	48 /°72	48 /°72	48 /°72	48 /°72	48 /°72	48 /°72	48 /°72	48 /°72	48 /°64	48	48	
			2	48 /°72	48 /°64	48 /°60	48	48	36	36	32	24	24		
			3	48	36	36	36	32	24	24	16	16	16		
28 to 45 Degrees		1	48 /°72	48 /°72	48 /°72	48 /°72	48 /°72	48 /°72	48 /°72	48 /°64	48	48	36		
		2	48 /°72	48 /°72	48 /°72	48 /°72	48 /°72	48 /°60	48	48	36	36			
		3	48 /°72	48 /°72	48 /°72	48 /°72	48 /°72	48 /°60	48	48	36	36			
31-35 PSF	B	0 to 7 Degrees	1	48 /°72	48 /°72	48 /°72	48 /°72	48 /°72	48 /°72	48 /°72	48 /°72	48 /°72	48 /°72	48 /°72	
			2	48 /°72	48 /°72	48 /°72	48 /°72	48 /°72	48 /°72	48 /°64	48	48	36		
			3	48 /°72	48 /°64	48 /°64	48 /°60	48	36	36	36	32	24		
		8 to 27 Degrees	1	48 /°72	48 /°72	48 /°72	48 /°72	48 /°72	48 /°72	48 /°72	48 /°72	48 /°72	48 /°72	48 /°72	
			2	48 /°72	48 /°72	48 /°72	48 /°72	48 /°72	48 /°72	48 /°64	48	48	36		
			3	48 /°72	48 /°72	48 /°64	48 /°60	48	48	36	36	32	24		
		28 to 45 Degrees	1	48 /°72	48 /°72	48 /°72	48 /°72	48 /°72	48 /°72	48 /°72	48 /°72	48 /°72	48 /°72	48 /°72	
			2	48 /°72	48 /°72	48 /°72	48 /°72	48 /°72	48 /°72	48 /°72	48 /°72	48 /°72	48 /°64	48 /°60	
			3	48 /°72	48 /°72	48 /°72	48 /°72	48 /°72	48 /°72	48 /°72	48 /°72	48 /°72	48 /°64	48 /°60	
	C	0 to 7 Degrees	1	48 /°72	48 /°72	48 /°72	48 /°72	48 /°72	48 /°72	48 /°72	48 /°72	48 /°72	48 /°64	48	
			2	48 /°72	48 /°72	48 /°72	48 /°64	48 /°60	48	36	36	32	24		
			3	48	48	36	36	36	32	24	24	16	16		
8 to 27 Degrees	1	48 /°72	48 /°72	48 /°72	48 /°72	48 /°72	48 /°72	48 /°72	48 /°72	48 /°72	48 /°72	48 /°64	48 /°60		
	2	48 /°72	48 /°72	48 /°72	48 /°64	48 /°60	48	36	36	36	36	32			
	3	48	48	48	36	36	32	24	24	24	24	16			
28 to 45 Degrees	1	48 /°72	48 /°72	48 /°72	48 /°72	48 /°72	48 /°72	48 /°72	48 /°72	48 /°64	48 /°60	48			
	2	48 /°72	48 /°72	48 /°72	48 /°72	48 /°72	48 /°72	48 /°64	48	48	36				
	3	48 /°72	48 /°72	48 /°72	48 /°72	48 /°72	48 /°72	48 /°64	48	48	36				
D	0 to 7 Degrees	1	48 /°72	48 /°72	48 /°72	48 /°72	48 /°72	48 /°72	48 /°72	48 /°64	48 /°60	48	48		
		2	48 /°72	48 /°64	48 /°60	48	48	36	36	32	24	24			
		3	36	36	36	32	32	24	24	16	16	16			
	8 to 27 Degrees	1	48 /°72	48 /°72	48 /°72	48 /°72	48 /°72	48 /°72	48 /°72	48 /°72	48 /°64	48	48		
		2	48 /°72	48 /°64	48 /°60	48	48	36	36	32	24	24			
		3	48	36	36	36	32	24	24	16	16	16			
	28 to 45 Degrees	1	48 /°72	48 /°72	48 /°72	48 /°72	48 /°72	48 /°72	48 /°72	48 /°64	48	48	36		
		2	48 /°72	48 /°72	48 /°72	48 /°72	48 /°72	48 /°60	48	48	36	36			
		3	48 /°72	48 /°72	48 /°72	48 /°72	48 /°72	48 /°60	48	48	36	36			

Appendix Span Tables

D

Portrait Orientation - ASCE 7-10 - Edge Mounts (2.75 ft Tributary Width)

Snow Load	Exposure Category	Roof Angle	Roof Zone	Basic Wind Speed, V (mph)											
				110	115	120	125	130	140	150	160	170	180		
36-40 PSF	B	0 to 7 Degrees	1	48 / *72	48 / *72	48 / *72	48 / *72	48 / *72	48 / *72	48 / *72	48 / *72	48 / *72	48 / *72	48 / *72	
			2	48 / *72	48 / *72	48 / *72	48 / *72	48 / *72	48 / *72	48 / *64	48	48	36		
			3	48 / *72	48 / *64	48 / *64	48 / *60	48	36	36	36	32	24		
		8 to 27 Degrees	1	48 / *72	48 / *72	48 / *72	48 / *72	48 / *72	48 / *72	48 / *72	48 / *72	48 / *72	48 / *72	48 / *72	48 / *72
			2	48 / *72	48 / *72	48 / *72	48 / *72	48 / *72	48 / *72	48 / *64	48	48	36		
			3	48 / *72	48 / *72	48 / *64	48 / *60	48	48	36	36	32	24		
		28 to 45 Degrees	1	48 / *72	48 / *72	48 / *72	48 / *72	48 / *72	48 / *72	48 / *72	48 / *72	48 / *72	48 / *72	48 / *72	48 / *72
			2	48 / *72	48 / *72	48 / *72	48 / *72	48 / *72	48 / *72	48 / *72	48 / *72	48 / *72	48 / *64	48 / *60	
			3	48 / *72	48 / *72	48 / *72	48 / *72	48 / *72	48 / *72	48 / *72	48 / *72	48 / *72	48 / *64	48 / *60	
	C	0 to 7 Degrees	1	48 / *72	48 / *72	48 / *72	48 / *72	48 / *72	48 / *72	48 / *72	48 / *72	48 / *72	48 / *64	48	
			2	48 / *72	48 / *72	48 / *72	48 / *64	48 / *60	48	36	36	32	24		
			3	48	48	36	36	36	32	24	24	16	16		
		8 to 27 Degrees	1	48 / *72	48 / *72	48 / *72	48 / *72	48 / *72	48 / *72	48 / *72	48 / *72	48 / *72	48 / *64	48 / *60	
			2	48 / *72	48 / *72	48 / *72	48 / *64	48 / *60	48	36	36	36	32		
			3	48	48	48	36	36	32	24	24	24	16		
		28 to 45 Degrees	1	48 / *72	48 / *72	48 / *72	48 / *72	48 / *72	48 / *72	48 / *72	48 / *72	48 / *64	48 / *60	48	
			2	48 / *72	48 / *72	48 / *72	48 / *72	48 / *72	48 / *72	48 / *64	48	48	36		
			3	48 / *72	48 / *72	48 / *72	48 / *72	48 / *72	48 / *72	48 / *64	48	48	36		
	D	0 to 7 Degrees	1	48 / *72	48 / *72	48 / *72	48 / *72	48 / *72	48 / *72	48 / *72	48 / *64	48 / *60	48	48	
			2	48 / *72	48 / *64	48 / *60	48	48	36	36	32	24	24		
			3	36	36	36	32	32	24	24	16	16	16		
		8 to 27 Degrees	1	48 / *72	48 / *72	48 / *72	48 / *72	48 / *72	48 / *72	48 / *72	48 / *72	48 / *64	48	48	
			2	48 / *72	48 / *64	48 / *60	48	48	36	36	32	24	24		
			3	48	36	36	36	32	24	24	16	16	16		
28 to 45 Degrees		1	48 / *72	48 / *72	48 / *72	48 / *72	48 / *72	48 / *72	48 / *72	48 / *64	48	48	36		
		2	48 / *72	48 / *72	48 / *72	48 / *72	48 / *72	48 / *60	48	48	36	36			
		3	48 / *72	48 / *72	48 / *72	48 / *72	48 / *72	48 / *60	48	48	36	36			
41-45 PSF	B	0 to 7 Degrees	1	48 / *72	48 / *72	48 / *72	48 / *72	48 / *72	48 / *72	48 / *72	48 / *72	48 / *72	48 / *72	48 / *72	
			2	48 / *72	48 / *72	48 / *72	48 / *72	48 / *72	48 / *72	48 / *64	48	48	36		
			3	48 / *72	48 / *64	48 / *64	48 / *60	48	36	36	36	32	24		
		8 to 27 Degrees	1	48 / *72	48 / *72	48 / *72	48 / *72	48 / *72	48 / *72	48 / *72	48 / *72	48 / *72	48 / *72	48 / *72	
			2	48 / *72	48 / *72	48 / *72	48 / *72	48 / *72	48 / *72	48 / *64	48	48	36		
			3	48 / *72	48 / *72	48 / *64	48 / *60	48	48	36	36	32	24		
		28 to 45 Degrees	1	48 / *72	48 / *72	48 / *72	48 / *72	48 / *72	48 / *72	48 / *72	48 / *72	48 / *72	48 / *72	48 / *72	
			2	48 / *72	48 / *72	48 / *72	48 / *72	48 / *72	48 / *72	48 / *72	48 / *72	48 / *72	48 / *64	48 / *60	
			3	48 / *72	48 / *72	48 / *72	48 / *72	48 / *72	48 / *72	48 / *72	48 / *72	48 / *72	48 / *64	48 / *60	
	C	0 to 7 Degrees	1	48 / *72	48 / *72	48 / *72	48 / *72	48 / *72	48 / *72	48 / *72	48 / *72	48 / *72	48 / *64	48	
			2	48 / *72	48 / *72	48 / *72	48 / *64	48 / *60	48	36	36	32	24		
			3	48	48	36	36	36	32	24	24	16	16		
		8 to 27 Degrees	1	48 / *72	48 / *72	48 / *72	48 / *72	48 / *72	48 / *72	48 / *72	48 / *72	48 / *72	48 / *64	48 / *60	
			2	48 / *72	48 / *72	48 / *72	48 / *64	48 / *60	48	36	36	36	32		
			3	48	48	48	36	36	32	24	24	24	16		
		28 to 45 Degrees	1	48 / *72	48 / *72	48 / *72	48 / *72	48 / *72	48 / *72	48 / *72	48 / *72	48 / *64	48 / *60	48	
			2	48 / *72	48 / *72	48 / *72	48 / *72	48 / *72	48 / *72	48 / *64	48	48	36		
			3	48 / *72	48 / *72	48 / *72	48 / *72	48 / *72	48 / *72	48 / *64	48	48	36		
	D	0 to 7 Degrees	1	48 / *72	48 / *72	48 / *72	48 / *72	48 / *72	48 / *72	48 / *72	48 / *64	48 / *60	48	48	
			2	48 / *72	48 / *64	48 / *60	48	48	36	36	32	24	24		
			3	36	36	36	32	32	24	24	16	16	16		
		8 to 27 Degrees	1	48 / *72	48 / *72	48 / *72	48 / *72	48 / *72	48 / *72	48 / *72	48 / *72	48 / *64	48	48	
			2	48 / *72	48 / *64	48 / *60	48	48	36	36	32	24	24		
			3	48	36	36	36	32	24	24	16	16	16		
28 to 45 Degrees		1	48 / *72	48 / *72	48 / *72	48 / *72	48 / *72	48 / *72	48 / *72	48 / *64	48	48	36		
		2	48 / *72	48 / *72	48 / *72	48 / *72	48 / *72	48 / *60	48	48	36	36			
		3	48 / *72	48 / *72	48 / *72	48 / *72	48 / *72	48 / *60	48	48	36	36			

Appendix Span Tables

D

Portrait Orientation - ASCE 7-10 - Edge Mounts (2.75 ft Tributary Width)

Snow Load	Exposure Category	Roof Angle	Roof Zone	Basic Wind Speed, V (mph)											
				110	115	120	125	130	140	150	160	170	180		
46-50 PSF	B	0 to 7 Degrees	1	48 /*72	48 /*72	48 /*72	48 /*72	48 /*72	48 /*72	48 /*72	48 /*72	48 /*72	48 /*72	48 /*72	
			2	48 /*72	48 /*72	48 /*72	48 /*72	48 /*72	48 /*72	48 /*64	48	48	36		
			3	48 /*72	48 /*64	48 /*64	48 /*60	48	36	36	36	32	24		
		8 to 27 Degrees	1	48 /*64	48 /*64	48 /*64	48 /*64	48 /*64	48 /*64	48 /*64	48 /*64	48 /*64	48 /*64	48 /*64	48 /*64
			2	48 /*64	48 /*64	48 /*64	48 /*64	48 /*64	48 /*64	48 /*64	48 /*64	48	48	36	
			3	48 /*64	48 /*64	48 /*64	48 /*60	48	48	36	36	32	24		
		28 to 45 Degrees	1	48 /*64	48 /*64	48 /*64	48 /*64	48 /*64	48 /*64	48 /*64	48 /*64	48 /*64	48 /*64	48 /*64	48 /*64
			2	48 /*64	48 /*64	48 /*64	48 /*64	48 /*64	48 /*64	48 /*64	48 /*64	48 /*64	48 /*64	48 /*60	
			3	48 /*64	48 /*64	48 /*64	48 /*64	48 /*64	48 /*64	48 /*64	48 /*64	48 /*64	48 /*64	48 /*60	
	C	0 to 7 Degrees	1	48 /*72	48 /*72	48 /*72	48 /*72	48 /*72	48 /*72	48 /*72	48 /*72	48 /*72	48 /*64	48	
			2	48 /*72	48 /*72	48 /*72	48 /*64	48 /*60	48	36	36	32	24		
			3	48	48	36	36	36	32	24	24	16	16		
		8 to 27 Degrees	1	48 /*64	48 /*64	48 /*64	48 /*64	48 /*64	48 /*64	48 /*64	48 /*64	48 /*64	48 /*64	48 /*64	48 /*60
			2	48 /*64	48 /*64	48 /*64	48 /*64	48 /*60	48	36	36	36	32		
			3	48	48	48	36	36	32	24	24	24	16		
		28 to 45 Degrees	1	48 /*64	48 /*64	48 /*64	48 /*64	48 /*64	48 /*64	48 /*64	48 /*64	48 /*64	48 /*64	48 /*60	48
			2	48 /*64	48 /*64	48 /*64	48 /*64	48 /*64	48 /*64	48 /*64	48 /*64	48	48	36	
			3	48 /*64	48 /*64	48 /*64	48 /*64	48 /*64	48 /*64	48 /*64	48 /*64	48	48	36	
	D	0 to 7 Degrees	1	48 /*72	48 /*72	48 /*72	48 /*72	48 /*72	48 /*72	48 /*72	48 /*64	48 /*60	48	48	
			2	48 /*72	48 /*64	48 /*60	48	48	36	36	32	24	24		
			3	36	36	36	32	32	24	24	16	16	16		
		8 to 27 Degrees	1	48 /*64	48 /*64	48 /*64	48 /*64	48 /*64	48 /*64	48 /*64	48 /*64	48 /*64	48	0	
			2	48 /*64	48 /*64	48 /*60	48	48	36	36	32	24	0		
			3	48	36	36	36	32	24	24	16	16	0		
28 to 45 Degrees		1	48 /*64	48 /*64	48 /*64	48 /*64	48 /*64	48 /*64	48 /*64	48 /*64	48	48	36		
		2	48 /*64	48 /*64	48 /*64	48 /*64	48 /*64	48 /*60	48	48	36	36			
		3	48 /*64	48 /*64	48 /*64	48 /*64	48 /*64	48 /*60	48	48	36	36			